

საქართველოს ახალგაზრდა ეკონომისტთა ასოციაცია



განგაშის

“2004 წლის სახელმწიფო ბიუჯეტის ცხრა თვის შესრულების
მონიტორინგის შედეგების და საქართველოს 2005 წლის
სახელმწიფო ბიუჯეტის კანონის პროექტის” შესახებ

ბიულეტენი #5

ბიულეტენი გამოიცემოდა პროექტის “ბიუჯეტის მონიტორინგის” ფარგლებში,
რომელიც ხორციელდება დიდი ბრიტანეთის საგარეო მოქმედო
ორგანიზაცია OXFAM საქართველოს წარმომადგენლობის მხარდაჭერით

თბილისი

2004

wi nasi t yvaoba

winamdebare angariSi `2004 wl is saxel mwifo biuj etis cxra Tvis Sesrul ebis monitoringis Sedegebis da saqarTvel os 2005 wl is saxel mwifo biuj etis kanonis proeqtis" Sesaxeb momzadebul ia saqarTvel os axal gazrda ekonomistTa asociaciis mier proeqtis "biuj etis monitoringis" fargl ebSi, didi britaneTis saqvel moqmedo organizaciis "oqsfamis" saqarTvel os warmomadgenl obasTan partniorobiT. proeqtis mizania saqarTvel os saxel mwifo biuj etis, quTaisis qal aqis biuj etis monitoringis gziT qveyanaSi saxel mwifo finansebi xarj vis saj aroobisa da gamWirval obis donis uzurnvel yofa da zegavl ena sabiuj eto procesebze.

angariSi momzadebul ia saqarTvel os finansTa saministros saxazino samsaxuris masal ebze dayrdnobiT.

angariSi gamoicema periodul ad, kvartal Si erTxel , sadac aisaxeba saxel mwifo da qal aq quTaisis biuj etis Sesrul ebis monitoringis Sedegebi da rekomendaciebi.

Sinaarsi

1. 2004 wl is saxel mwi fo biuj et is cxra Tvis Semosul obebis
moni toringis Sedegebi ----- 3
2. 2004 wl is central uri biuj et is cxra Tvis gadasaxdel ebis
moni toringis Sedegebi ----- 16
3. saqarTvel os social uri dazRvevis erTiani saxel mwi fo
fondis 2004 wl is cxra Tvis Semosavl ebi ----- 26
4. saqarTvel os 2005 wl is saxel mwi fo biuj et is Sesaxeb
kanonis proeqt i ----- 35

1. 2004 wl is saxel mwifo biujetis cxra Tvis
Semosul obebis monitoringis Sedegebi

saqarTvel os 2004 wl is saxel mwifo biujetis Semosavl ebisa da grantebis cxra Tvis saprognozo parametri (central uri biujetis sabiujeto organizaciebis social uri gadasaxadebis gareSe) saqarTvel os finansTa saministros mier damtkicebuli ganweris Sesabamisad 1 076 milioni lariT ganisazRvra. Semosavl ebis mobilizebam ki 68,4 milioni lariT anu 6 procentiT gadaaWarba prognozis mocul obas da 1 114,4 milioni lari Seadgina (ix. cxrili #1). wl iur prognozTan SedarebiT ki saxel mwifo biujetis Semosavl ebi da grantebi 69 procentiTaa Sesrul ebuli. central uri biujetis Semosavl ebisa da grantebis kuTxiT cxra Tvis saprognozo parametrTan SedarebiT adgili aqvs 107 procentian Sesrul ebas (nacvlad 780,5 milioni laris, 832,1 milioni lari iqna mobilizebuli), xolo wl iur prognozTan SedarebiT Sesrul ebulia 66 procentiT.

sagadasaxado departamentis kuTxiT saxel mwifo biujetis sagadasaxado Semosavl ebma 252,1 milioni lari Seadgina rac prognozirebul parametr 4 procentiT aRemateba. sabaJo departamentis kuTxiT ki saxel mwifo biujetSi mobilizebul ma sagadasaxado Semosavl ebma prognozirebul 351,3 milion lars eqvis procentiT gadaaWarba da 371,5 milioni lari Seadgina. aRsaniSnavia, rom rogorc sabaJo aseve sagadasaxado departamentebis kuTxiT mimdinare wl is ganmavl obaSi saxel mwifo biujeti yovel Tviurad gadaWarbebiT srul deba. amastan, darRveulia Zveli "tradiciebic", romelic saxel mwifo biujetis mudmivad Seusrul ebl obaSi gamoixateboda da rodesac Ziritadi Tanxebis mobilizeba saangariSo periodis boloricxvebisatvis xdeboda. es ki Tavistavad misal mebeli faqtia. gansakuTrebiT es exebs sagadasaxado departaments, romelic ukanasknel periodSi saxel mwifo biujetis Sesavsebad arafers iSurebs.

cxril i #1. saqarTvel os 2004 wl is saxel mwifo biuj etis cxra Tvis

Semosul obebi s Sesrul eba

(aTasi l ari)

dasaxel eba	proгнози	Sesrul eba	gadaxra	Sesru- l eba, %
saxel mwifo biuj etis Semosavl ebi da grantebi	1,076,039	1,144,402	68,364	106
central uri biuj etis Semosavl ebi da grantebi	780,545	832,102	51,556	107
sagadasaxado Semosavl ebi	592,699	623,618	30,919	105
arasagadasaxado Semosavl ebi	159,594	172,263	12,669	108
kapital uri Semosavl ebi	5,193	3,009	-2,184	58
grantebi	23,060	33,212	10,152	144
social uri dazRvevis fondi	240,050	253,959	13,909	106
sagzao fondi	55,443	58,342	2,899	105
deficitis dafinanseba		151,527	151,527	
saxazino val debul ebebi		9,565	9,565	
mokl evadiani sesxi Tvis bol omde		44,371		
sainvesticio kreditebi		96,640	96,640	
wina wel s gamouyenebel i sabiuj eto saxsrebs dabruneba		951	951	
sabajo departamenti	351,272	371,480	20,209	106
sagadasaxado departamenti	241,427	252,138	10,710	104

* saxel mwifo biuj etis Semosavl ebi da grantebi mocemul ia central uri biuj etis sabiuj eto organizaciebis social uri gadasaxadebis gareSe.

sagadasaxado Semosavl ebi

central uri biuj etis Semosavl ebSi ZiriTadi nawil i _ 75 procenti sagadasaxado Semosavl ebze modis. 2004 wl is cxra Tvis monacemebiT central uri biuj etis sagadasaxado Semosavl ebi cxra Tvis prognozTan mimarTebsi 5 procentiani gadaWarbebiT Sesrul da da 623,6 mil ionil ari Seadgina (ix cxril i #2), wliuri prognozis Sesrul ebas 187,7 mil ionil ari akli a, anu jer-jerobiT wliuri prognozi 77 procentiTaa Sesrul ebul i. 2003 wl is cxra Tvis monacemebTan SedarebiT (434,1 mil ionil ari)

lari) mimdinare wels 44 procentiani zrdaa. rac Seexeba konkretul gadasaxadebs, aq Semdegi mdgomareobaa:

cxrili #2. saqarTvel os 2004 wl is central uri biujetis cxra

Tvis sagadasaxdo Semosavl ebi

(aTasi lari)

gadasaxadis saxe	proгнози	Sesrul eba	gadaxra	Sesru- l eba, %
sagadasaxado Semosavl i sul	592,699	623,618	30,919	105
saSemosavlo gadasaxadi	16,380	16,387	7	100
mogebis gadasaxadi	11,310	11,311	1	100
damatebuli Rirebul ebis gadasaxadi	388,145	410,219	22,074	106
maT Soris				
sagadasaxado departamentidan	176,817	185,256	8,438	105
sabaJo departamentidan	211,328	224,963	13,635	106
aqcizi	106,902	110,868	3,966	104
maT Soris				
sagadasaxado departamentidan	36,204	37,765	1,561	104
sabaJo departamentidan	70,698	73,103	2,406	103
sabaJo gadasaxadi *	69,246	73,414	4,168	106
fiqsirebuli gadasaxadi	240	365	125	152
mcire biznesis gadasaxadi	476	474	-1	100
sxva gadasaxadebi	0	580	580	

* sabaJo gadasaxadSi gaTval iswinebulia fiqsirebuli gadasaxadi msubuqi avtomobil ebis importze.

sagadasaxo Semosavl ebis ZiriTadi nawili _ 65 procenti kvlav damatebuli Rirebul ebis gadasaxadze modis (ix. diagrama #1), romelic cxra Tvis monacemebiT prognozTan (388,1 milioni lari) Sedarebit 6 procentiT metia mobilizebuli da 410,2 milion lars Seadgens. aqedan sabaJo departamentis mier mobilizebulia 224,9 milioni lari, xolo sagadasaxado departamentis mier ki 185,2 milioni laria amoRebuli. wina wl is anal ogiur periodTan Sedarebit ki aRniSnuli gadasaxadis saxiT miRebuli Semosavl ebi 34 procentiTaa gazrdili (ix. diagrama #2). aqcizis saxiT central ur biujetSi saangariSo periodSi 110,9 milioni lari

Sevida, rac cxra Tvis prognozis 104 procentia, SarSandel Tan SedarebiT ki adgil i aqvs 93 procentian zrdas. 73,4 mil ion i l aria amoRebul i sabaJo gadasaxadis kuTxiT, rac saprognozo parametrs 6 procentiT aRemateba. 2003 wl is cxra Tvis monacemebTan SedarebiT ki 54 procentiT metia. aRniSnul i gadasaxadi central uri biuj etis sagadasaxado Semosavl ebSi 12 procentis ikavebs. 3 procentiTaa warmodgenil i saSemosavl o gadasaxadi, romel ic cxra Tvis informaci iT 100 procentiTaa Sesrul ebul i da 16,4 mil ion l ars Seadgens. wina wl is anal ogiur periodTan SedarebiT ki mocemul i gadasaxadis Sesrul eba 14 procentiTaa gazrdil i. mogebis gadasaxadi, roml is xvedriTi wil i central uri biuj etis sagadasaxado Semosavl ebSi 2 procentia cxra Tvis prognozTan SedarebiT 125 procentiT Sesrul da da 11,3 mil ion i l ari Seadgina, es ki SarSandel Tan SedarebiT 25 procentiT metia. fiqsirebul i gadasaxadis saxiT Semosul ia 365 aTasi l ari, rac prognozis 125 procentis Seadgens. mcire biznesis gadasaxadma ki mimdinare wl is cxra Tvis monacemebiT 474 aTasi l ari Seadgina, anu prognozis 100 procenti. sxva gadasaxadebi 580 aTasi l aris odenobiTaa amoRebul i.

diagrama #1. gadasaxadebis xvedriTi wil i saqarTvel os 2004 wl is central uri biuj etis sagadasaxado Semosavl ebSi, cxra Tvis mixedviT

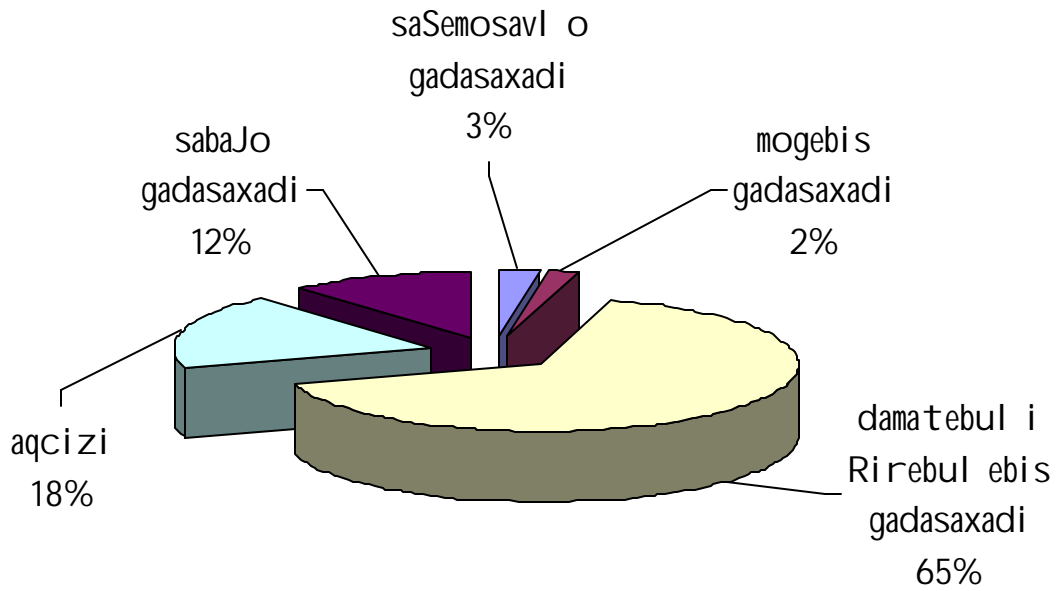
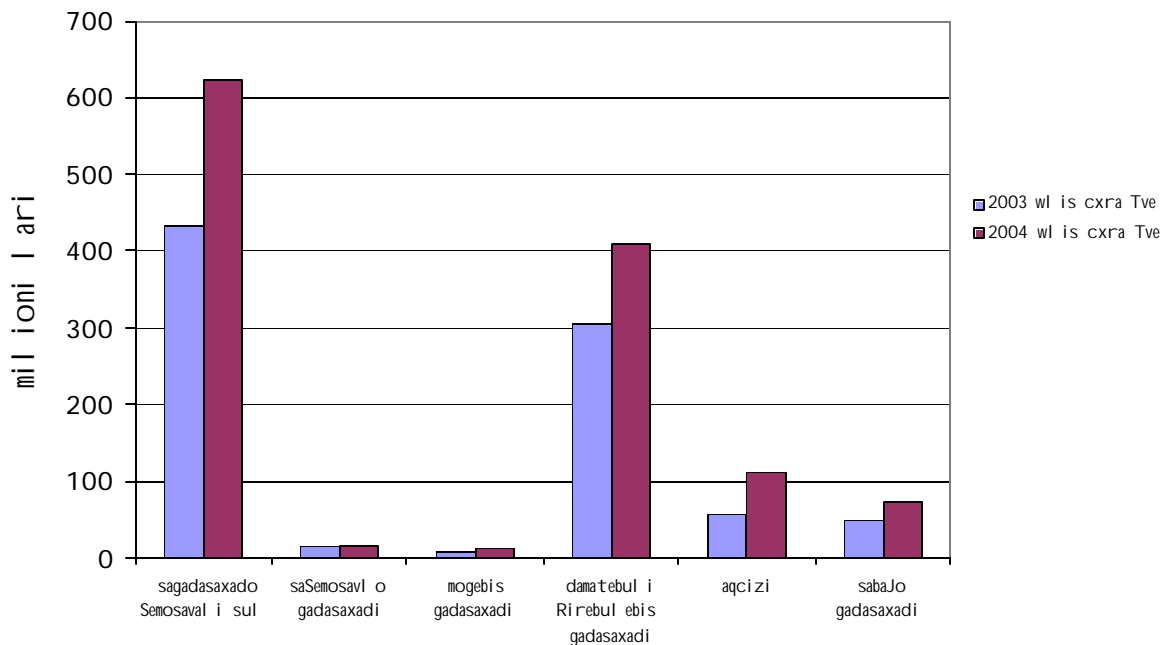


diagrama #2. 2003-2004 wl is central uri biuj etis cxra Tvis sagadasaxado Semosavl ebi



arasagadasaxado Semosavl ebi

arasagadasaxado Semosavl ebi Sesrul ebi kuTxiT mimdinare wel i gansakuTrebiT gamoirCeva. Semosavl ebi mobil izebis aseTi tempi arc erT wel s ar dafiqsirebul a. Cvens wina biul etenebSic ႁvniSnavdiT da axl ac SegaxsenebT, rom amis gamomwvevi ZiriTadad ori mizezia: erTi, special uri Semosavl ebi gaerTianda arasagadasaxado Semosavl ebSi, ramac maTi zrda gamoiwvia da meore _ saqarTvel os mTavrobam da kerZod samarTal damcavma organoebma aqtiurad daiwyes ukanonod miTvisebul i Tanxebis amoReba, es Tanxebi ki arasagadasaxado Semosavl ebi muxl iT, "sxva arasagadasaxado Semosavl ebi", aRiricxeba. swored Sesrul ebi aseTi tempidan gamomdinare saqarTvel os 2004 wl is saxel mwifo biuj etis kanonSi Setanil i cvl il ebebiT arsebul i arasagadasaxado Semosavl ebi prognozi faqtobrivad gaormagda. 1 oqtombris mdgomareobiT ki aseTi gazrdil i wl iuri prognozi ukve 70 procentiTaa Sesrul ebul i da srul ad Sesrul ebas mxol od 73,2 mil ion i l ari akl ia.

2004 wl is cxra Tvis monacemebiT, arasagadasaxado Semosavl ebi kuTxiT, central ur biuj etSi 172,2 mil ion i l ari a mobil izebul i (ix. cxril i #3), rac prognozirebul parametr s rva procentiT aRemateba. 2003 wl is anal ogiur periodTan SedarebiT ki 271 procentiT metia mobil izebul i (2003 wl is cxra TveSi Semosul i iyo 46,4 mil ion i l ari).

cxril i #3. saqarTvel os 2004 wl is central uri biuj etis cxra

Tvis arasagadasaxado Semosavl ebi

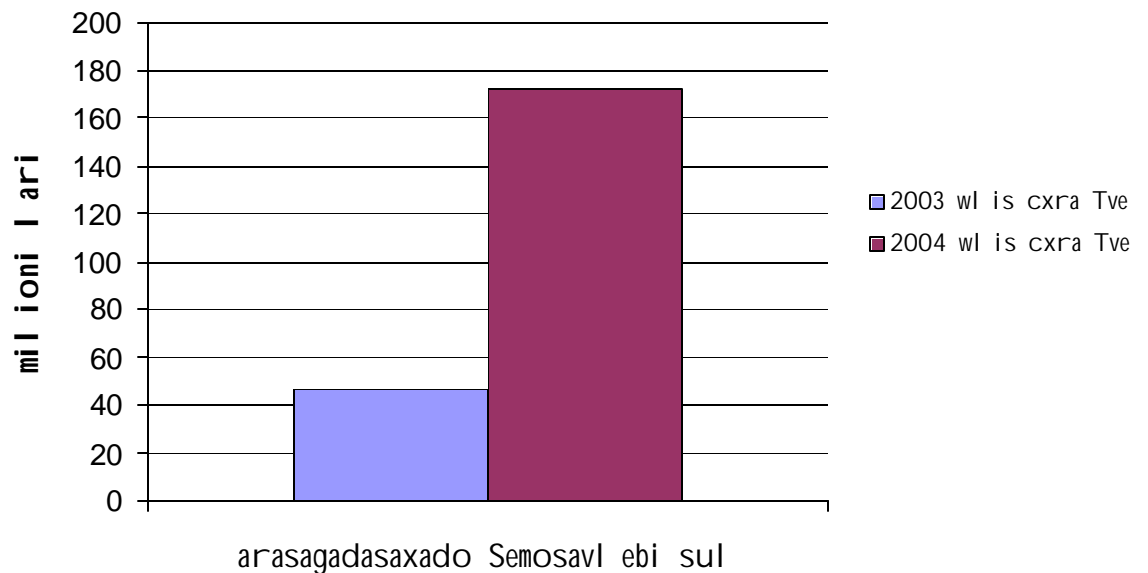
(aTasi l ari)

maCvenebl ebi	prognozi	Sesrul eba	gadaxra	Sesru- l eba, %
arasagadasaxado Semosavl ebi sul	159,594	172,263	12,669	108
maT Soris				
mosakrebl ebi	24,022	30,571	6,549	127
saxel mwifo qonebis ij aridan miRebul i Semosaval i	814	1,032	218	127
momsaxurebis gawevidan miRebul i Semosaval i	2,503	3,902	1,399	156
Semosaval i araZiriTadi (Tanmdevi) gayidvidan	12,667	8	-12,660	0.1
Semosaval i dividendebidan da erovnul i bankis mogebidan	16,636	17,801	1,165	107
saxel mwifo sexsis procenti (sargebel i)	6,685	1,718	-4,967	26
j arimiTa da sanqci iT miRebul i Semosaval i	5,195	6,316	1,121	122
gacemul i kreditebis dabruneba	14,039	15,873	1,834	113
sxva arasagadasaxado Semosavl ebi	77,033	95,042	18,010	123

arasagadasaxado Semosavl ebis ZiriTadi nawil i _ 55 procenti "sxva arasagadasaxado Semosavl ebze" modis, roml is kuTxiTac 95 milioni l aria "amoRebul i" da saprognozo parametris mocul obas 23 procentiT aRemateba. 18 procenti modis mosakrebl ebze cxra Tvis monacemebiT mosakrebl ebis saxiT central ur biuj etSi 30,5 milioni l aria Sesul i, rac prognozTan (24 milioni l ari) SedarebiT 27 procentiT metia dividendebidan da erovnul i bankis mogebidan 17,8 milioni l aria amoRebul i. aqedan, saxel mwifos wil obrivi monawil eobiT moqmedi sawarmoebidan miRebul i dividendebi Seadgens 5,8 milion l ars, xol o erovnul i bankis mogebam prognozis Sesabamisad 12 milioni l ari Seadgina. saxel mwifos mier gacemul i kreditebis ukan dabrunebiT mimdinare wl is cxra TveSi 15,8 milioni l ari iqna mobilizebul i, rac saprognozo parametrze 13 procentiT metia. aRniSnul i muxl is xvedriTi wili arasagadasaxado

Semosavl ebSi 9 procentis Seadgens. danarCeni muxl ebidan miRebul i Semosavl ebi SedarebiT umniSvnel oa: saxel mwifo qonebis ij aridan 1 milioni lari iqna miRebul i, rac cxra Tvis prognozis 127 procentia. momsaxurebis gawevidan 3,9 milioni laria Semosul i. jarimebisa da sanqciebis saxiT miRebul ma Semosaval ma 6,3 milioni lari Seadgina, anu 22 procentiT meti vidre amas prognozi iTval iswinebda. arasagadasaxado Semosavl ebSi mxol odori muxl ia, roml ebi ar iqna srul ad Sesrul ebul i. erTi es aris "saxel mwifo sesxis procenti (sargebel i)", romel ic prognozTan SedarebiT (6,7 milioni lari) 26 procentiTaa Sesrul ebul i (mobilizebul ia 1,7 milioni lari). meore muxl i ki, romel ic gansakuTrebiT mcire Sesrul ebiT gamoirCeva esaa "Semosaval i araZiriTadi (Tanmdevi) gayidvidan". es ukanasknel i mxol od 0,1 procentiTaa Sesrul ebul i (prognozis Sesabamisad unda Semosul iyo 12,6 milioni lari, Tumca mxol od 8 aTasi lari iqna miRebul i).

diagrama #3. saqarTvel os 2003-2004 wl is central uri biuj etis arasagadasaxado Semosavl ebi



kapital uri Semosavl ebi

saqarTvel os 2004 wl is biuj etis kanonSi kapital uri Semosavl ebis saprognozo parametri Tavdapirvel ad 20,3 milioni l arIT iyo gansazRvrul i, Tumca 2004 wl is 13 agvistos kanoniT "saqarTvel os 2004 wl is saxel mwifo biuj etis Sesaxeb" saqarTvel os kanonSi cvl il ebebis da damatebebis Setanis Taobaze, misi prognozi 81,4 milion l aramde ganisazRvra. am cvl il ebis mizezi saqarTvel os mTavrobis axal i ekonomikuri pol itika iyo, romel ic saxel mwifo obieqtebis maqsimal urad momgebianad realizacias iTval iswinebs. Sesabamisad unda momxdariyo biuj etis Semosavl ebis zrda. miuxedavad aseTi optimisturi midgomisa SeiZl eba iTqvas, rom saqarTvel os mTavrobis mol odini j er-j erobiT ar marTI deba, radgan cxra Tvis monacemebiT kapital uri Semosavl ebis saxIT saxel mwifo biuj etSi mxol od 3 milioni l aria miRebul i. Sesabamisad cxra Tvis prognozi, romel ic 5,2 milioni l arIT iyo gansazRvrul i, mxol od 58 procentiT Sesrul da.

grantebi da deficitis dafinansebis wyaroebi

mimdinare wl is cxra Tvis monacemebiT saqarTvel os 2004 wl is saxel mwifo biuj etSi miRebul ia 33,2 milioni l aris grantebi. prognozis Sesabamisad gansazRvrul i iyo 23 milioni l aris miReba, faqtobrivma Sesrul ebam ki prognozi rebul parametr s 10,1 milioni l arIT gadaaWarba da Sesabamisad adgil i qonda 144 procentian Sesrul ebas. wl iur prognozTan SedarebiT, romel ic 119 milioni l arITaa gansazRvrul i grantebis muxl iT misaRebi Semosavl ebi mxol od 28 procentiTaa Sesrul ebul i.

saxel mwifo biuj etis deficitis dasafinansebl ad cxra Tvis monacemebiT 151,5 milioni l aris iqna mobil izebul i. aqedan deficitis dafinansebis atvis saSinao wyaroebidan faqtobrivad 10,5 milioni l aris iqna

miRebul i. maT Soris: saxazino val debul ebebis ganTavsebis gziT central uri biuj etis Sesavsebad miRebul ma Semosaval ma 9,6 mil ion i l ari Seadgina; wina wel s gamouyenebel i saxsrebi s dabrunebam _ 950 aTasi l ari. biuj etis deficitis dafinansebis aTvis, sagareo wyaroebidan miimarTa 141 mil ion i l ari. maT Soris: reformebis mxardamWeri msofil io bankis grZel vadiani SeRavaTiani krediti Seadgens 44,4 mil ion l ars; saerTaSoriso safinanso organizaciebis da ucxo saxel mwifoTa mTavrobebis mier investiciuri xasiaTis, grZel vadiani SeRavaTiani kreditebi ki 96,6 mil ion l ars. unda aRiniSnos, rom am ukanasknel Ta mier gamoyofil i kreditebisa da grantebis saxsrebi pirdapir iricxeba Sesabamisi investiciuri proeqtebis ganmaxorciel ebel i rgol ebi s komerciul bankebSi gaxsnil angariSebze, saidanac mimdinareobs maTi xarj va. saqarTvel os 2004 wl is saxel mwifo biuj etis Sesaxeb" saqarTvel os kanoniT ucxoeti dan miRebul i dafinansebis wyaroebi T da grantebi T gansaxorciel ebel i investiciuri proeqtebis xarj ebi gaTval iswinebul ia saministroebisa da uwyebebis asignebebsi, romel Ta dazustebul i informacia saxazino samsaxurs ar gaaCnia. **saerTaSoriso organizaciebis sainvesticio proeqtebis Semosavl ebisa da xarj ebi s Sesaxeb informaciis mowodebas nebi T Tu unebi led aferxeben cal keul i saministroebi da uwyebebi, roml ebi c pasuxismgebel ni arian am Tanxebis aTvisebaze da angariSgebis saqarTvel os finansTa saministroSi wardgenaze.**

saqarTvel os 2003-2004 wl ebi s saxel mwifo biuj etis cxra Tvis Semosul obebis Sedareba

mimdinare wel s, cxra Tvis monacemebi T, saqarTvel os saxel mwifo biuj etis Semosavl ebisa da grantebis kuTxiT 2003 wl is anal ogiur periodTan Sedarebi T 456,6 mil ion l ari T metia mobil izebul i, anu adgil i aqvs 66 procentian zrdas (ix. cxril i #4; diagrama #4). 65 procentiTaa

gazrdil i central uri biujetis Semosavl ebi da grantebi (miRebul ia 329 milioni l arIT meti).

sagadasaxado departamentis kuTxiT saxel mwifo biujetSi mobilizebul i Semosavl ebi 2003 wl is monacemebTan SedarebiT 193,8 milioni l arIT metia, procentul ad ki zrda 332 procentis Seadgens. sabaJo departamentma 9 TveSi 46 procentiT meti Semosavl is mobilizeba moaxdina da SarSandel Tan SedarebiT 46 procentiani zrda dafiqsirda.

cxril i #4. saqarTvel os 2003-2004 wl ebis saxel mwifo biuj etis

cxra Tvis Semosul obebis Sedareba

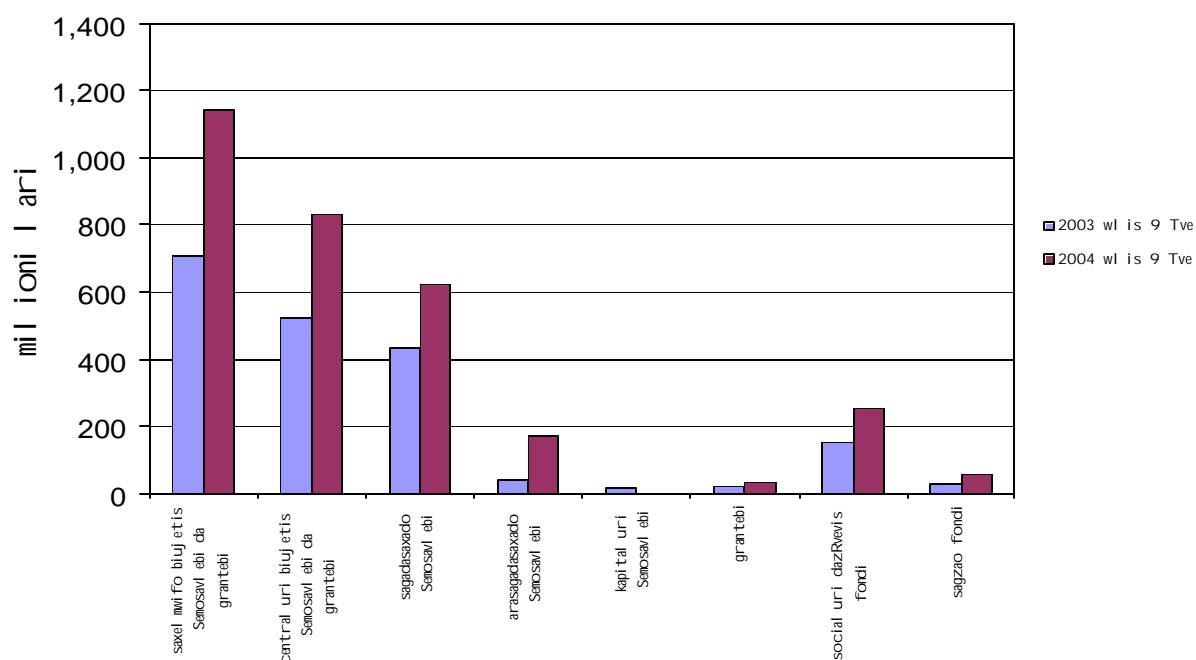
(aTasi l ari)

dasaxel eba	2003 wl is 9 Tve	2004 wl is 9 Tve	zrda wina wel Tan SedarebiT	
			l arebSi	Sesru- l eba, %
saxel mwifo biuj etis Semosavl ebi da grantebi	687,803	1,144,402	456,599	166
central uri biuj etis Semosavl ebi da grantebi	503,065	832,102	329,037	165
sagadasaxado Semosavl ebi	434,127	623,618	189,491	144
arasagadasaxado Semosavl ebi	46,408	172,263	125,855	371
kapital uri Semosavl ebi	20,223	3,009	-17,214	15
grantebi	22,530	33,212	10,682	147
social uri dazRvevis fondi	154,264	253,959	99,695	165
sagzao fondi	30,474	58,342	27,868	191
deficitis dafinanseba	140,934	151,527	42,493	108
saxazino val debul ebebi	18,923	9,565	-9,358	51
erovnul i bankidan miRebul i sesxi	31,900			
msofli o bankis grZel vadiani SeRavaTiani krediti		44,371	44,371	
wina wel s gamouyenebel i sabiuj eto saxsrebis dabruneba sainvesticio krediti	90,111	96,640	951 6,529	107
sabaJo departamenti	253,959	371,480	117,521	146
sagadasaxado departamenti	58,342	252,138	193,796	432

central uri biuj etis sagadasaxado Semosavl ebis kuTxiT adgil i aqvs 44 procentian zrda. 2003 wl is cxra Tvis monacemebiT sagadasaxado Semosavl ebi 434,1 milioni l ariT iyo mobil izebul i. mimdinare wel s ki 1 oqtombris mdgomareobiT 189,5 milioni l ariT metia amoRebul i. kvl av gansakuTrebul yuradRebas imsaxurebs arasagadasaxado Semosavl ebi, roml ebic 271 procentiTaa gazrdil i. mimdinare wl is cxra TveSi 125,8 milioni l ariT metis mobil izeba moxerxda vidre SarSan. grantebi 47 procentiTaa gazrdil i. erTaderTi muxli, romel ic Semcirebul ia esaa kapital uri Semosavl ebi, roml ebic SarSandel Tan SedarebiT mxol od 15

procentiTaа Sесrul еbul i. rac Seexeba saxel mwifo special ur фонdebs: еrTiani saxel mwifo sagzao фондis Semosavl еbi gazrdil ia 27,9 mil ionil ariT; social uri dazRveis еrTiani saxel mwifo фондis Semosavl еbis kuTxiT ki adgil i aqvs 91 procentian zrdas. deficitis dafinansebis wyaroebi 42,5 mil ionil ariTaa gazrdil i.

diagrama #4. saqarTvel os 2003-2004 wl ebis saxel mwifo biujetis cxra Tvis Semosavl еbi sa da grantebis Sedareba



2. 2004 wl is central uri biuj etis cxra Tvis gadasaxdel ebis moni toringis Sedegebi

2.1. saqarTvel os 2004 wl is central uri biuj etis cxra Tvis xarj ebi ekonomikuri kl asifikaciis mixedviT

“saqarTvel os 2004 wl is saxel mwifo biuj etis Sesaxeb kanoniT damtkicebul i central uri biuj etis xarjebis kvartal uri ganweris Sesaxeb” saqarTvel os finansTa saministros 2004 wl is 20 agvistos #548 brZanebiT damtkicebul i ganweriT 2004 wl is cxra Tvis central uri biuj etis sabiuj eto Semosavl ebidan gasawevi xarjebis gegma 1 074,6 milioni l ariT ganisazRvra (ix. cxrili #5). aRebul i val debul ebebis odenobam Seadgina 864,7 milioni l aris, xolo faqtobrivad gaweul ma xarj ma 940,9 milioni l aris.

val debul ebisa da damowmebis meqanizmtan dakavSirebiT unda aRvniSnoT, rom 2003 wl is 1 ianvridan 2004 wl is 1 seqtembramde finansTa saministros saxazino samsaxuri moqmedebda saqarTvel os prezidentis 2002 wl is 17 oqtombris #1307 gankargul ebiT miRebul i “central uri biuj etis xarjebis kontrol i val debul ebisa da damowmebis meSveobiT” instruqciit. mimdinare wl is 1 seqtembridan amoqmedda saqarTvel os finansTa ministris 2004 wl is 31 agvistos brZaneba #571 “sabiuj eto organizaciebis mier val debul ebis aRebisa da xarjebis gawevis wesis Sesaxeb” instruqciis damtkicebis Taobaze. am ukanasknel Si gaTval iswinebul ia is nakl ovanebebi, romel sac Zveli instruqcia iTval iswinebda, rac ufro efeqtursa da moqnils xdis aRniSnuli meqanizmis moqmedebas.

2004 wl is cxra Tvis monacemebiT central uri biuj etidan gaweul i xarjebi ekonomikuri kl asifikaciis Sesabamisad Semdegnairad gamoiyureba:

**cxrili #5. saqarTvel os 2004 wl is central uri biujetis
gadasaxdel ebi ekonomikuri kl asifikaciIT**

(aTasi l ari)

x a r j e b i	gegma	xarj i	gadaxra	Sesru- l eba, %
mimdinare xarj ebi	883,658	798,297	-85,361	90
muSa-mosamsaxureTa Sromis anazRaureba	140,753	124,785	-15,969	89
damqiravebl idan anaricxebi	22,077	19,862	-2,215	90
mivl inebebi	8,164	6,507	-1,657	80
sxva saqonel i da momsaxureba	155,140	168,569	13,430	109
maT Soris:			0	
ofisi		10,836	10,836	
komunal uri		22,749	22,749	
kvebis xarj ebi	12,806	11,364	-1,442	89
medikamentebi		338	338	
rbil i inventari da uniforma		4,191	4,191	
transportisa da teqniki s Senaxva		20,415	20,415	
special uri programebis momsaxureba		4,746	4,746	
sxva xarj ebi		93,930	93,930	
procentebis gadaxda	112,388	109,107	-3,281	97
subsidiebi da mimdinare transfertebi	445,138	369,468	-75,669	83
kapital uri xarj ebi	44,094	30,565	-13,529	69
dakrediteba dafarvis gamokl ebiT	146,864	112,091	-34,773	76
sul central uri biujetis xarj ebi:	1,074,617	940,954	-133,663	88

central uri biujetis xarjebis 85 procenti mimdinare xarjebze modis, romel Ta cxra Tvis gegma 883,6 milioni l ariT ganisazRvra, faqtobrivad ki 798,3 milioni l ari daixarj a, anu gegmis Sesrul ebas 85,3 milioni l ari daakl da. mimdinare xarjebidan 16 procenti muSa-mosamsaxureTa Sromis anazRaurebaze gaweul xarj ebs ekuTvnis, romel Ta dasafinansebl ad mimdinare wl is cxra TveSi 124,8 milioni l ari iqna gamoyofil i, rac gegmis 89 procentia. social uri anaricxebis saxiT dagegmil i iyo 22 milioni l aris daxarj va, faqtobrivad ki gegmis 90 procenti daixarj a, rac 19,8 mil ion l ars Seadgens. 80 procentiT dafinansda mivl inebebi, romel Ta xarj i cxra Tvis gegmis Sesabamisad 8,2

milioni laris unda yofil iyo. mimdinare xarjebSi mniSvnel ovani adgili ukavia muxl s "sxva saqoneli da momsaxureba". am ukanasknel is kuTxiT 168,6 milioni laris xarjia gaweuli, rac dagegmil parameters 9 procentiT aWarbebs. unda aRiniSnos, rom centraluri biujetis gadasaxdel ebis ekonomikur kl asifikaciaSi es erTaderTi muxlia, romelic dafinansebis dadebiti macvenebliT gamoirCeva. mocemul muxlSi Ziritadi adgili _ 56 procenti, "sxva xarjebis" muxl s ukavia, romelic cxra Tvis monacemebiT 93,9 milioni laris dafinasebuli. 6 procenti modis ofisis xarjebze. komunaluri xarjebi, romelic "sxva saqoneli da momsaxurebis" muxlSi 13 procentiTaa warmodgenili 22,7 milioni laris dafinansda. kvebis xarjebis dasafinanseblad gegmit gaTvaliswinebuli 12,8 milioni laris nacvlad daixarja 11,3 milioni laris. umniSvnelo xarjia gaweuli medikamentebze _ 338 atasi laris. 20,4 milioni laria daxarjuli transportisa da teqniki Senaxvaze, xolo specialuri programebis momsaxurebaze 4,7 milioni laria gamoyofil. 4,7 milioni laris daixarj arbil inventarisa da uniformis SeZenaze.

"sxva saqoneli da momsaxurebis" kategoriit gaTvaliswinebuli asignebebidan xorcieldeba sazRvargareT saqarTvelos diplomatiur warmomadgenlobata dafinansebac. 2004 wlis cxra TveSi saelCoebis SenaxvisaTvis gegmit gaTvaliswinebuli asigneba 22,4 milioni laris ganisazRvra, faqtobrivad gacemul ma Tanxebma ki 21,7 milioni laris Seadgina. es ukanaskneli moicavs diplomatiuri korpusis saxel faso da sacxovrebel xarjebis. organizebulad Casaxlebul devnilTa komunaluri xarjebis (moxmarebuli el eqtroenergiisa da wylis Rirebul eba, organizebulad Casaxlebis adgil ebze dasaqmebuli personalis xel fasebi) asanazRaureblad gamoiyo 14,9 milioni laris.

wina wl ebSi warmoqmnil davalianebebeze dakisrebuli Tanxebis saxiT sasamarTilos gadawyvetilebaTa Sesabamisad, erovnuli bankis mier,

central uri biujetis angariSebidan iZul ebis wesiT 497 milioni l ari iqna CamoWril i.

subsidiebisa da mimdinare transfertebis 2004 wl is cxra Tvis gegma 445,1 milioni l ariT ganisazRvra, faqtobrivad ki 369,5 milioni l ariT iqna dafinansebul i, rac gegmis mxol od 83 procentia. mocemul i muxl idan ZiriTadad saxel faso da social uri val debul ebebis dafarva xorciel deboda.

teritoriul i erTeul ebis biujetebs transfertis saxiT saangariSo periodSi gadaericxaT 101,3 milioni l ari, anu gegmiuri maCvenebl is 100 procenti. aqedan social ur transfertebze miimarTa 99,3 milioni l ari, rac gegmis 95 procentia, xolo special uri transfertis saxiT 1,9 milioni l aris gacema moxda. aRniSnul i muxl idan devnil Ta Semweobebis dafarvaze miimarTa 34,2 milioni l ari. social uri dazRvevis erTian saxel mwifo fondSi central uri biujetidan transfertis saxiT 41,9 milioni l ari miimarTa. maT Soris 31,9 milioni l ari pensiebisatvis, 10 milioni l ari ki transferti umweo mdgomareobaSi myof ojaxTa social uri daxmarebis programaze. amastan, social uri dazRvevis erTiani saxel mwifo fondis transfertSi asaxul ia 16 milioni l ari, romelic "zogierTi sabiujeto xarjis dafinansebis damatebiTi RonisZiebebis Sesaxeb" saqarTvel os prezidentis 2004 wl is 26 april is #348 gankargul ebis Sesabamisad wina periodis sapensio daval ianebaTa dasafaravad iqna gamoyenebul i.

subsidiebisa da mimdinare transfertebis muxl idan saangariSo periodSi kul turis dawesebul ebebis dasafinansebl ad 11,3 milioni l ari iqna mimarTul i, rac cxra Tvis gegmis 83 procentis Seadgens. saqarTvel os tel evizias da radiomauwyebel obas 11,5 milioni l ari gamoeyo. energosistemis subsidiebisatvis ki 36,6 milioni l ari iqna gaTval iswinebul i, anu cxra Tvis gegmis 84 procenti.

kapitaluri xarjebi mimdinare wlis cxra Tvis monacemebiT centraluri biujetis xarjebis ekonomikur klasifikaciaSi 3 procentiTaa warmodgenili. gegmis mixedviT aRniSnuli muxlidan gasawevi xarjebi 44 milioni laris unda dafinansebuliyo, faqtobrivad ki 30,5 milioni laris xarjva ganxorciel da, rac gegmiuri parametris 69 procentis Seadgens.

mimdinare wlis cxra Tvis ganmavlobaSi sagareo saxel mwifo valdebul ebebis momsaxurebisa da sagareo valis ZiriTadi Tanxis dafarvisaTvis dagegmili iyo 111,2 milioni laris xarji, faqtobrivad ki mimarTuli iqna 92,8 milioni laris. maT Soris sexsis momsaxurebis Tanxam Seadgina 37,7 milioni laris, xolo sagareo val ebis ZiriTadi Tanxa 55,1 milioni laris daifara. saSinao valdebul ebebis momsaxurebisaTvis centraluri biujetidan gaweulma xarjebma 71,4 milioni laris Seadgina, rac gegmis 96 procentia. aqedan erovnuli bankis sexsis momsaxurebisaTvis centraluri biujetis angariSidan CamoiWra 54,2 milioni laris; saxazino valdebul ebebis diskontis xarjebma ki Seadgina 17,2 milioni laris (gegmis 96 procenti).

unda aRniSnos, rom mimdinare wels, mxarjavi erTeulebisa da sabiujeto organizaciebis mier, centraluri biujetis angariSebze arsebuli Tanxebis srulad aTviseba ver xerxdeba da ukve sistematur xasiaTs izens. eqvsi Tvis monacemebiT finansTa saministros saxazino samsaxuris salare angariSebze arsebuli gardamavali naSTi 41,6 milion laris Seadgenda, 1 oqtonbris mdgomareobiT ki aRniSnuli naSTi 51,1 milioni laris odenobiTaa dafiqsirebuli.

rac Seexeba centraluri biujetis savaluto angariSze arsebul naSTs, cxra Tvis mdgomareobiT igi 360 aTas laris Seadgens.

wina periodis davalianeBaTa dasafaravad finansTa ministris brZanebis Sesabamisad mimdinare wlis cxra TveSi gansazRvruli iyo 61 milioni laris daxarjva, Tumca faqtobrivma xarjvam 57,2 milioni laris Seadgina. aqedan: Sromis anazRaurebis davalianeBaT dasafaravad gamoyofili iqna 13,7 aTasi

lari, faqtobrivad ki 13,3 atasi lari gaica; damqiravebl idan anaricxebis muxl iT gansazRvrul i iyo 2,4 milioni laris xarji, saidanac faqtobrivad 2,3 milioni lari daixarja; mivl inebebis muxl iT daifara 33 milioni laris daval ianeba; subsidiebis da mimdinare transfertebis kategoriis mixedviT gansazRvrul i iyo 35,4 milioni laris daval ianebis dafarva faqtobrivad ki daifara 34,4 milioni lari. amasTan, saqarTvel os prezidentis "zogierTi sabujeto xarjis dafinansebis damatebiTi RonisZieebis Sesaxeb" gankargul ebis Sesabamisad ganaTl ebis muSakTa wina periodis daval ianebebis dasafaravad gamoiyo 1,4 milioni lari, teritoriuli erTeulebis biujetebis transfertis saxiT 3,2 milioni lari gadaericxaT, xolo danarCeni _ 16 milioni lari pensionerTa wina wl ebSi dagrovili sapensio daval ianebis dasafaravad miimarTa.

saqarTvel os prezidentis sarezerovo fondi "saqarTvel os 2004 wl is saxel mwifo biujetis Sesaxeb" saqarTvel os kanoniT 10 milioni lariT gansazRvra. cxra Tvis monacemebiT ki fondidan gamoyofil i fuladi saxsrebis odenobam 31,9 milioni lari Seadgina, rac 21,9 milioni lariT aRemateba kanoniT gansazRvrul macvenebel s. Sesabamisad saWiroa "saqarTvel os 2004 wl is saxel mwifo biujetis Sesaxeb" kanonSi cvil ebebis Setana raTa aRniSnuli fondis moculoba dazustebuli iqnes. aseTi cvil il eba kanonSi SedarebiT adre iyo Sesatani, Tumca aRniSnuli sakiTxi 13 agvistos kanonSi "saqarTvel os 2004 wl is saxel mwifo biujetis Sesaxeb kanonSi cvil il ebebisa da damatebebis Setanis Taobaze" ar iqna gaTval iswinebuli.

2004 wl is centraluri biujetis cxra Tvis xarjebis ekonomikuri kl asifikaciis mixedviT ganxilvisas saintereso misi Sedareba 2003 wl is analogiuri periodis monacemebTan:

**cxril i #6. saqarTvel os 2003-2004 wl is central uri biuj etis
cxra Tvis xarj ebi ekonomikuri kl asifikaciis mixedviT**

(aTasi l ari)

x a r j e b i	2003 wl is cxra Tve	2004 wl is cxra Tve	zrda wina	
			wel Tan SedarebiT l arebSi	prcen- tebSi
mimdinare xarj ebi	503,897	798,297	294,400	158
muSa-mosamsaxureTa Sromis anazRaureba	83,351	124,785	41,434	150
damqiravebl idan anaricxebi	18,346	19,862	1,516	108
mivl inebebi	3,994	6,507	2,513	163
sxva saqonel i da momsaxureba	81,284	168,569	87,286	207
maT Soris:				
ofisi	3,403	10,836	7,433	318
komunal uri	18,229	22,749	4,520	125
kvebis xarj ebi	12,855	11,364	-1,491	88
medikamentebi	179	338	159	189
rbil i inventari da uniforma	3,093	4,191	1,098	135
transportisa da teqniki Senaxva	9,897	20,415	10,519	206
special uri programebis momsaxureba	7,708	4,746	-2,962	62
sxva xarj ebi	25,920	93,930	68,010	362
procentebis gadaxda	118,766	109,107	-9,659	92
subsidiebi da mimdinare transfertebi	198,157	369,468	171,311	186
kapital uri xarj ebi	1,191	30,565	29,375	2567
dakrediteba dafarvis gamokl ebiT	156,023	112,091	-43,932	72
sul central uri biuj etis xarj ebi	661,111	940,954	279,843	142

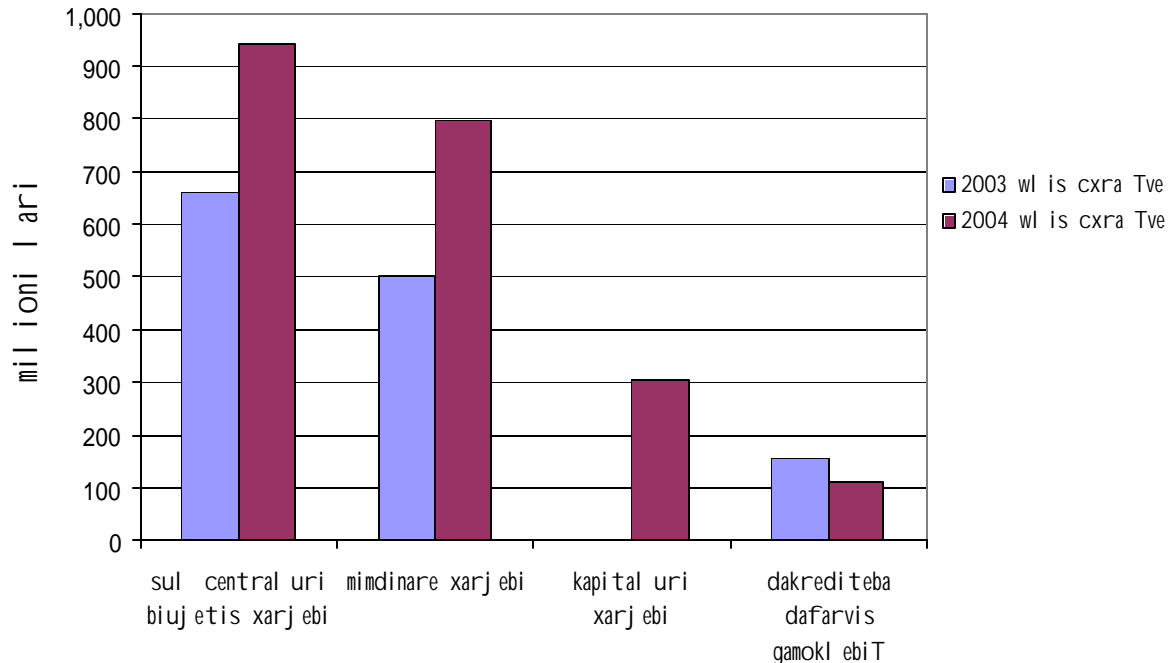
mimdinare wl is cxra Tvis monacemebiT central uri biuj etis xarj ebi wina wel Tan SedarebiT 42 procentiTaa gazrdil i. maT Soris gansakuTrebiT unda gamovarCioT kapital uri xarj ebi, romel Ta zrdam 2003 wl is anal ogiur periodTan mimarTbaSi 2 467 procenti Seadgina.

mimdinare xarj ebi gazrdil ia 294,4 milioni l ariT, anu 58 procentiT. aqedan gansakuTrebul i zrda dafiqsirda "sxva saqonel i da momsaxurebis" muxl is mixedviT, sadac 87,3 mil ion l arze metia daxarj ul i vidre es SarSan iyo. aRniSnul kategoriaSi maRal i zrdis tempiT gamoirCeva ofisis xarj ebi _ gazrdil ia 218 procentiT, aseve "sxva

ხარჯების მუხლი – 262 პროცენტით. აქვე უნდა აღინიშნოს კვების ხარჯები, რომლებიც წინა წელთან შედარებით 22 პროცენტითაა შესრულებული. ეს მუხლი ერთდართა, რომელიც შემცირება განიცდის.

მომდინარე წელს მნიშვნელოვნად გაზრდილი მუშა-მოსამსახურეთა შრომის ანაზღაურების დაფინანსებლად გაწეული ხარჯები. სასაბუღალტრო წელთან შედარებით ადგილი აქვს 50 პროცენტითაა. შედარებით ნაკლებად – 8 პროცენტითაა გაზრდილი ანაზღაურების დამკვირვებელიდან. აღსანიშნავია ასევე მიწის ნაკვეთები, რომლებიც 2003 წლის ცხრა წლის მონაცემებთან შედარებით 2,5 მილიონ ლარით ანუ 63 პროცენტით მეტია დაფინანსებული. რაც შეეხება კატეგორიას “დაკრედიტება დაწარმის გამოკლებით”, იგი სასაბუღალტრო წელთან შედარებით 72 პროცენტითაა დაფინანსებული.

დიაგრამა #5. საერთო ღირებულება 2003-2004 წლის ცენტრალური ბიუჯეტის ცხრა წლის ხარჯები ეკონომიკური კლასიფიკაციის მიხედვით



donorebis mier dafinasebul i sabujeto organizaciebis Semosul obebidan gaweul i xarjebi

central uri biujetis dafinasebaze myofi organizaciebis donorebis mier dafinasebul i Semosul obebis ganTavseba xdeba finansTa saministros saxazino samsaxurSi gaxsnil special ur angariSze saidanac xorciel deba maTi xarj va.

cxril i #7. 2004 wl is cxra TveSi central uri biujetis dafinasebaze myofi organizaciebisaTvis donorebis mier dafinasebul i Semosul obebidan gaweul i xarj i

(aTasi l ari)

d a s a x e l e b a	gegma	xarj i	gadaxra	Sesru- l e b a %
saqarTvel os central uri saarCevno komisiis aparati	16,400	16,215	-185	99
saqarTvel os ganaTl ebisa da mecnierebis saministros aparati	113,535	76,286	-37,249	67
saqarTvel os iusticiis saministros aparati	18,444	18,444	0	100
saqarTvel os Sromis, j anmrTel obisa da social uri dacvis saministros aparati	54,725	53,544	-1,181	98
saqarTvel os finansTa saministros central uri aparati	3,025,165	2,967,233	-57,932	98
saqarTvel os axal gazrdobis saqmeTa saxel mwifo departamentis aparati	36,461	36,456	-6	100
saqarTvel os statistikis saxel mwifo departamentis aparati	220,752	212,846	-7,906	96
saqarTvel os mecnierebaTa akademiis institutebi da sxva samecniero dawesebul ebebi	85,208	85,102	-106	100
sul xarj i	3,601,549	3,484,603	-116,946	97
maT Soris:				
muSa-mosamsaxureTa Sromis anazRaureba	3,011,328	2,991,130	-20,198	99
mivl inebebi	36,293	36,293	0	100
sxva saqonel i da momsaxureba	110,122	99,499	-10,624	90
subsidiebi da mimdinare transfertebi	86,100	57,294	-28,806	67
kapital uri xarjebi	357,706	300,388	-57,318	84

2004 wl is cxra TveSi donorebis mier dafinansebuli Semosul obebidan gasawevi xarjebis gegma 3,6 milioni lariT gansazRvra, faqtobrivad ki 3,5 milioni laris xarjva ganxorciel da. yvelaze metad aRniSnuli saxsrebidan gamoirCeva finansTa saministros xarjebi, romlebic 3 milioni laris odenobiT iyo gansazRvruli, faqtobrivad ki 2,9 milioni lari daixarja saqarTvelos statistikis saxel mwifo departamentis gegma gansazRvruli iyo 220,7 atasi lariT, faqtobrivad ki 212,8 atasi lari daixarja. ganaTlebis da mecnierebis saministrom daxarja 76,3 milioni lari nacvlad dagegmili 113,5 milioni laris. saqarTvelos mecnierebaTa akademiis institutebis da sxva samecniero dawesebul ebebis xarjebma 85,1 milioni lari Seadgina, rac dagegmilis 100 procentia.

aRniSnuli Tanxebidan yvelaze meti _ 2,9 milioni lari daixarja muSa-mosamsaxureTa Sromis anazRaurebaze. kapitalur xarjebze ki 357,7 atasi lari daixarja.

3. saqarTvel os social uri dazRvevis erTiani saxel mwifo fondis 2004 wl is cxra Tvis Semosavl ebi

saqarTvel os social uri dazRvevis erTiani saxel mwifo fondis 2004 wl is cxra Tvis Semosavl ebi gegma 327 milioni lariT ganisazRvra. faqtobrivma Sesrul ebam ki 332,2 milioni lari Seadgina, rac gegmis 102 procentia.

cxrili #8. saqarTvel os social uri dazRvevis erTiani saxel mwifo fondis 2004 wl is cxra Tvis Semosavl ebi

(aTasi lari)

d a s a x e l e b a	gegma	Sesrul eba	gadaxra	Sesru- l e b a, %
naSTi		5,397		
sakuTari Semosavl ebi	265,561	276,205	10,644	104
transfer ti saqarTvel os central uri biuj etidan	54,405	41,977	-12,428	77
<i>m a T S o r i s:</i>				
transfer ti umweoTa social ur (oj axebis) daxmarebaze	11,793	10,000	-1,793	85
teritoriul i erTeul ebi biuj etidan gadmocemul i Tanxebi urgentul i da ambul atoriul i programebis dasafinansebl ad	7,015	8,486	1,471	121
wina wl ebSi gacemul i pensiebis mobruneba		2	2	
gaurkvevel i Semosavali		112		
sul Semosavl ebi*	326,981	332,179	5,198	102

* saqarTvel os erTiani saxel mwifo fondis Semosavl ebi ar Seicavs aWaris avtonomiuri respublikis social uri dazRvevis erTiani saxel mwifo fondis Semosavl ebs, roml ebmac winaswari informaciT 6,0 milioni lari Seadgina

sakuTari Semosavl ebis (social uri gadasaxadebis) saxiT mobil izebul ia 276,2 milioni laris Semosaval i, rac dagegmil parametrze 10,6 milioni larisT anu 4 procentiT metia.

saqarTvel os central uri biujetid an transfertis saxiT dagegmil i iyo 54,4 milioni laris miReba, faqtobrivad ki 41,9 milioni laria miRebul i, rac gegmis 77 procentia. 85 procentiTaa (10 milioni larisT) dafinansebul i transferti umweoTa social ur (oj axebis) daxmarebaze. teritoriul i erTeul ebis biujetebidan gadmocemul ma Tanxebma, mosaxl eobis janmrTel obis dacvis "bazisuri paketis" Tanadafinansebisatvis, Seadgina 8.5 milioni laris, anu gegmiuri macvenebis (7 milioni laris) 121 procenti. wina wl ebSi gacemul i pensiebis mobrunebul ma Tanxebma Seadgina 2 aTasi laris, xolo gaurkvevel ma Semosavl ebma ki 112 aTasi laris.

saqarTvel os social uri dazRvevis erTiani saxel mwifo fondis angariSze 2004 wl is cxra TveSi, 2003 wl is anal ogiur periodTan SedarebiT mobil izebul ia 134,6 milioni larisT anu 68 procentiT meti (cxrili #9).

sakuTari Semosavl ebi (sagadasaxado Semosavl ebi) gazrdil ia 86 procentiT (127.9 milioni larisT). 2003 wl is 9 TveSi central uri biujetid an saqarTvel os social uri dazRvevis erTiani saxel mwifo fondis angariSze transfertis saxiT gadaricxul i iqna 42,6 milioni laris, 2004 wl is cxra TveSi ki es Tanxa erTi procentiT Sencirda da 42 milioni laris Seadgina. 800 aTasi larisTaa Sencirebul i agreTve transferti umweoTa social ur (oj axebis) daxmarebaze.

cxrili #9. saqarTvel os social uri dazRvevis erTiani saxel mwifo

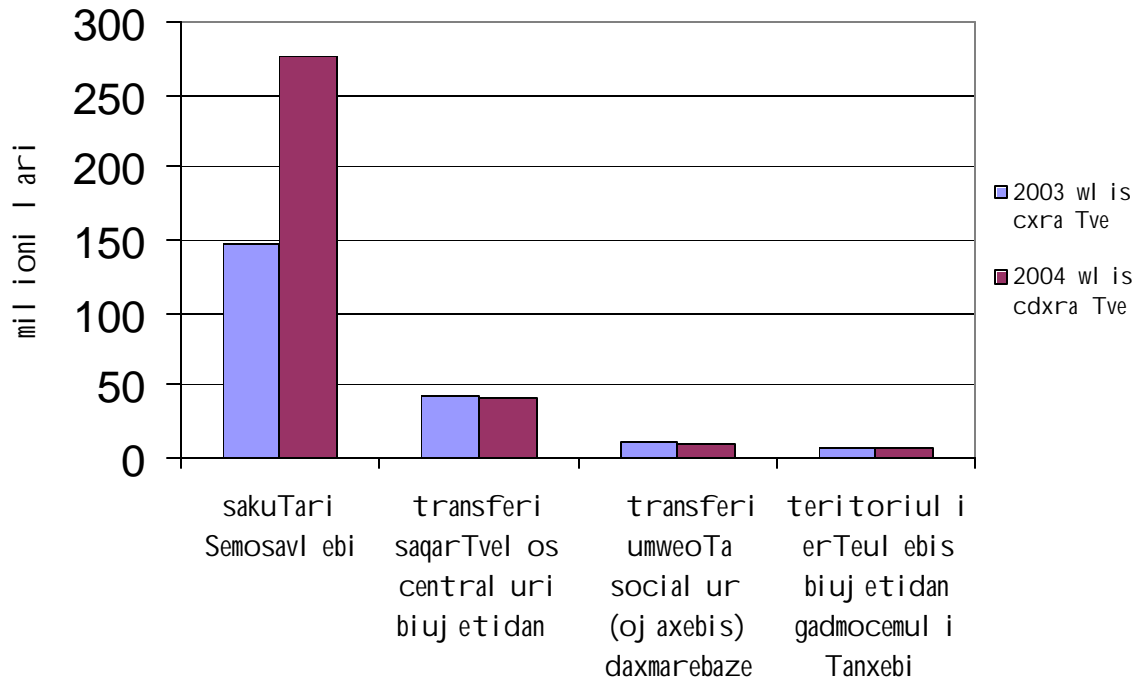
Fondis 2003-2004 wl ebis cxra Tvis Semosavl ebis Sedareba

(aTasi l ari)

d a s a x e l e b a	2003 wl is cxra Tve	2004 wl is cdxra Tve	zrda wina wel Tan SedarebiT	
			l arebSi	procentebSi
naSTi	3,863	5,397	1,534	140
sakuTari Semosavl ebi	148,350	276,205	127,855	186
transfertis saqarTvel os central uri biuj etidan	42,580	41,977	-603	99
<i>maT Soris:</i>				
transfertis umweoTa social ur (oj axebis) daxmarebaze	10,800	10,000	-800	93
teritoriuli erTeul ebis biuj etidan gadmocemuli Tanxebi urgentuli da ambul atoriuli programebis dasafinansebl ad	6,600	8,486	1,886	129
wina wlebsi gacemuli pensebis mobraneba	0	2	2	
gaurkveveli Semosavali	0	112	112	
sul Semosavl ebi	197,530	332,179	134,649	168

teritoriuli erTeul ebis biuj etebidan janmrTel obis dacvis "bazisuri paketis" dasafinansebl ad gadmocemuli Tanxebi 29 procentiTaa gazrdili (1,9 milioni l ariT). saqarTvel os erTiani saxel mwifo fondis 2003-2004 wl ebis cxra Tvis Semosavl ebs Soris gansxvaveba naTI ad Cans diagrama #6-ze.

diagrama #6. saqarTvel os social uri dazRvevis erTiani saxel mwifo fondis 2003-2004 wl ebis cxra Tvis Semosavl ebis Sedareba



saqarTvel os social uri dazRvevis erTiani saxel mwifo fondis xarjebis 2004 wl is cxra Tvis gegma 327 milioni LariT ganisazRvra, faqtobrivma xarjma ki 307,2 milioni Lari Seadgina rac gegmis 94 procentia.

social uri dacvis programebze daxarjulia 234,9 milioni Lari, dagegmil ze 7,6 milioniT nakl ebi. am Tanxis yvel aze didi nawil i modis pensionerTa pensiebze _ 219,5 milioni Lari. maT Soris wina wl ebSi warmoqmil i sapensio daval ianebebis dasafaravad daixarja 58,8 milioni Lari. aqedan, sasamarTl o gadawyvetil ebiT gacemul i iqna 3,4 milioni Lari. pensiebisa da daxmarebebis gacemis momsaxurebis xarjebma 2,9 milioni Lari Seadgina (gegmis 68 procenti).

**cxril i #10. saqarTvel os social uri dazRvevis erTiani saxel mwifo
fondis 2004 wl is cxra Tvis xarj ebi**

(aTasi I ari)

x a r j e b i	gegma	Sesrul eba	gadaxra	Sesrul eba %
social uri dacvis programebi	242,507	234,887	-7,620	97
pensionerTa pensiebi daxmarebebi droebiT SromisuunarobasTan dakavSi rebiT	223,795 2,685	219,512 2,317	-4,283 -368	98 86
umweoTa social uri (oj axuri) daxmareba _saxel mwifo biuj etidan gasawevi xarj ebi nawil i	11,793	10,171	-1,622	86
9 april s daRupul pirTa oj axebebi xarj ebi	22	22	0	100
pensiebis da daxmarebebis gacemis momsaxurebis xarj ebi	4,212	2,865	-1,347	68
j anmrTel obis dacvis saxel mwifo programebi	70,892	61,989	-8,903	87
mosaxl eobis ambul atoriul i daxmarebis saxel mwifo programa	10,958	10,304	-654	94
mosaxl eobis stacionarul i daxmarebis saxel mwifo programa	41,790	37,334	-4,456	89
mosaxl eobis specifikuri medikamentebiT uzrunvel yofis programa	7,645	6,855	-790	90
j andacvis programebSi wina periodSi warmoqm. daval . dafarva	10,500	7,496	-3,004	71
SSmp social uri adaptaciis xel Sewyobis programa	3,385	2,641	-744	78
umuSevris social uri dacvisa da dasaqmebis xel Sewyobis saxel mwifo programebi	2,427	700	-1,727	29
saorganizacio da administraciul i xarj ebi	7,071	6,289	-782	89
dasaqm. sax. samsaxuris saorg. da administ. xarj ebi	700	700	0	100
sul xarj i	326,982	307,206	-19,776	94

umweoTa social ur (oj axur) daxmarebebeze, romel ic finansdeba saxel mwifo biuj etidan daxarj ul ia 10,2 mil ion i l ari, rac gegmis 86 procentia. srul ad dafinansda 9 april s daRupul pirTa oj axebisaTvis gasawevi xarj i. gegmasTan SedarebiT 368 aTasi l ariT nakl ebi dafinansda daxmarebebi droebiT SromisuunarobasTan dakavSirebiT. j anmrTel obis dacvis programebze, cxra Tvis gegmis mixedviT unda daxarj ul iyo 70,9 mil ion i l ari, Tumca 8,9 mil ion i l ariT nakl ebi daixarj a da faqtobrivma xarj vam 62 mil ion i l ari Seadgina (gegmis 87 procenti). mosaxl eobis ambul atoriul i daxmarebis saxel mwifo programa dafinansda 94 procentiT (10,3 mil ion i l ari), xol o stacionarul i daxmarebis da specifikuri medikamentebiT uzrunvel yofis programebi Sesabamisad 89 procentiT (37,3 mil ion i l ari) da 90 procentiT (6,9 mil ion i l ari). wina periodis daval ianebis dasafaravad gamoyofil i iqna 7,5 mil ion i l ari. dafinansebis yvel aze dabal i maCvenebl iT _ 29 procentiT gamoirCeva umuSevris social uri dacvisa da dasaqmebis xel Sewyobis saxel mwifo programebi. maTze gaweul ma xarj ebma 700 aTasi l ari Seadgina. saorganizacio da administraciul i xarj ebi cxra Tvis monacemebis mixedviT gegmis (7,1 mil ion i l aris) 89 procentis (6,3 mil ion i l ars) Seadgens.

saqarTvel os social uri dazRvevis erTiani saxel mwifo fondis 2003-2004 wl ebis cxra Tvis xarj ebis SedarebiT naTI ad Cans, rom mimdinare periodis gegmis Seusrul ebl obis miuxedavad (94 procenti), aSkarad ukeTesi mdgomareobaa.

**cxril i #11. saqarTvel os social uri dazRvevis erTiani saxel mwifo
fondis 2003-2004 wl ebis cxra Tvis xarj ebis Sedareba**

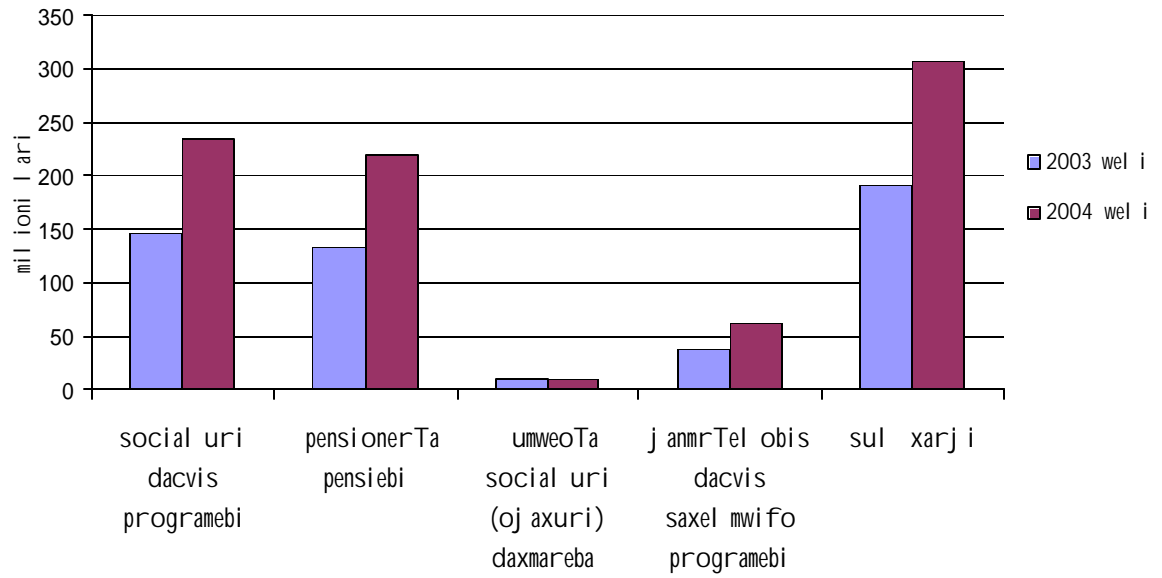
(aTasi I ari)

x a r j e b i	2003 wl is cxra Tve	2004 wl is cxra Tve	zrda wina wel Tan SedarebiT	
			I arebSi	procentebSi
social uri dacvis programebi	146 013	234 887	88 874	161
pensionerTa pensiebi	132 540	219 512	86 972	166
daxmarebebi droebiT SromisuunarobasTan dakavSirebiT	929	2 317	1 388	249
umweoTa social uri (oj axuri) daxmareba _saxel mwifo biujetidan gasawevi xarj ebis nawil i	10 772	10 171	-601	94
9 april s daRupul pirTa oj axevis xarj ebi	22	22	0	100
pensiebisa da daxmarebebis gacemis momsaxurebis xarj ebi	1 750	2 865	1 115	164
j anmrTel obis dacvis saxel mwifo programebi	37 622	61 989	24 367	165
mosaxl eobis ambul atoriul i daxmarebis saxel mwifo programa	7 505	10 304	2 799	137
mosaxl eobis stacionarul i daxmarebis saxel mwifo programa	24 044	37 334	13 290	155
mosaxl eobis specifiku medikamentebiT uzrunvel yofis programa	5 172	6 855	1 683	133
wina periodis daval ianebis dafarva	901	7 496	6 595	832
SSmp social uri adaptaciis xel Sewyobis programa	1 131	2 641	1 510	234
umuSevris social uri dacvisa da dasaqmebis xel Sewyobis saxel mwifo programebi	1 670	700	-970	42
migrantTa social uri da samoqal aqo reabilitaciis programa	250			
afxazeTis I tol vil inval idTa kavSiris programa	200			
saorganizacio da administraciul i xarj ebi	3 635	6 289	6 289	173
dasaqm. sax. samsaxuris saorg. da administ. xarj ebi	365	700	335	192
<i>sul xarj i</i>	190 886	307 206	116 320	161

saxel mwifo fondis 2004 wl is cxra Tvis xarjebi, 2003 wl is anal ogiur periodTan SedarebiT 61 procentiTaa gazrdili anu daxarjulia 116,3 milioni larit meti. socialuri dacvis programebze daxarja 88,9 milioni larit (61 procentiT) meti vidre wina wl is cxra TveSi. maT Soris, 66 procentiani zrdaa pensionerTa pensiebis dafinansebaSi, agreTve daxmarebebi droebiT SromisuunarobasTan dakavSirebiT da pensiebis da daxmarebebis gacemis momsaxurebis xarjebi Sesabamisad gazrdilia 149 da 64 procentiT. mimdinare wl is cxra TveSi janmrTelobis dacvis programebze 62 milioni lari iqna gamoyofili, rac wina wl is anal ogiur periodTan SedarebiT 24,4 milioni larit metia (adgili aqvs 165 procentian zrdas). wina periodis davaliane bis dasafaravad gankuTvnil xarjebi 6,6 milioni larit gaizarda, 2003 wl is cxra TveSi am kuTxiT 7,5 milioni lari iqna gamoyofili, Sesabamisad zrdam 732 procenti Seadgina.

socialuri dazRvevis erTiani saxel mwifo fondis xarjebSi wina wel Tan SedarebiT mkveTradaa Sencirebuli umuSevris socialuri dacvisa da dasaqmebis xel Sewyobis saxel mwifo programebi (Sencirda 970 aTasi larit). 6 procentiT Sencirebulia agreTve, saxel mwifo biujetidan umweoTa socialur (ojaxuri) daxmarebaze gasawevis xarjebi. 2004 wl is cxra TveSi saerTod araa dafinansebuli migrantTa socialuri da samoqal aqo reabilitaciis programa da afxazetis ltolvil invalidTa kavSiris programa.

diagrama #7. saqarTvel os social uri dazRvevis erTiani saxel mwifo fondis 2003-2004 wl ebis cxra Tvis xarj ebis Sedareba.



4. saqarTvel os 2005 wl is saxel mwifo biuj etis Sesaxeb kanonis proeqti

1.1. saqarTvel os 2005 wl is saxel mwifo biuj etis Semosul obebi

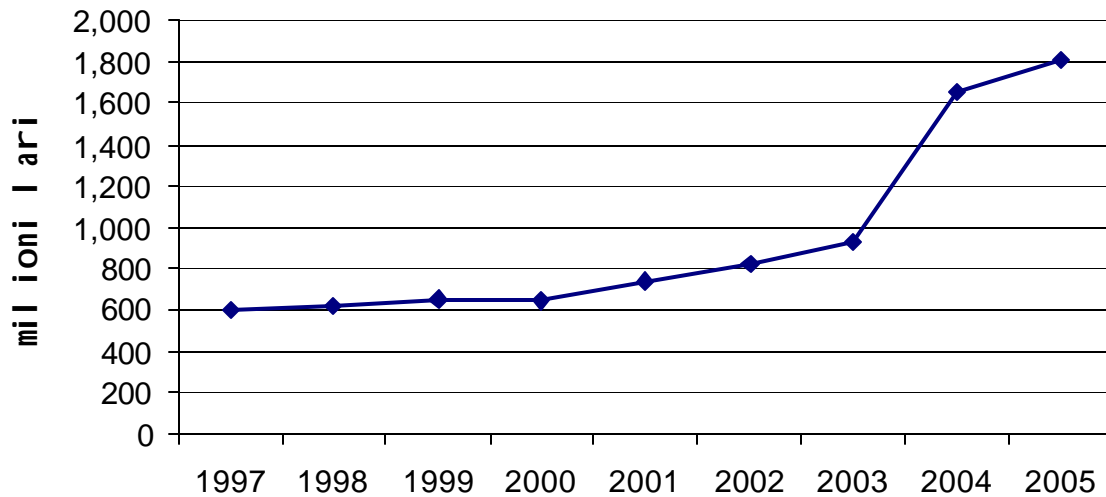
saqarTvel os 2005 wl is saxel mwifo biuj etis Sesaxeb kanonis proeqti saqarTvel os mTavrobam saqarTvel os parl aments kanonmdebl obis Tanaxmad 1 oqtombrisTvis warudgina.

aRniSnul kanonproeqtSi mniSvnel ovani cvl il ebebia warmodgenil i. gauqmebul ia special uri saxel mwifo fondebi "saqarTvel os social uri dazRvevis erTiani saxel mwifo fondi" da "saqarTvel os erTiani saxel mwifo sagzao fondi". am fondebis gasaceml ebi gaTval iswinebul ia Sesabamisi saministroebis xarj ebSi. aRniSnul is Sedegad saqarTvel os 2005 wl is saxel mwifo biuj etis Sesaxeb saqarTvel os kanoni aRar iTval iswinebs saqarTvel os central uri biuj etis Semosavl ebsa da xarj ebs.

proeqtis Tanaxmad, saqarTvel os **saxel mwifo biuj etis Semosavl ebisa da grantebis saprognozo maCvenebel i 1 812,7 milion l ars** Seadgens da 2004 wl is saxel mwifo biuj etis Semosavl ebisa da grantebis prognozs 157,6 milioni l ariT aRemateba (ix cxrili #13; diagrama #8), anu gaTval iswinebul ia 10 procentiani zrda.

diagrama #8. saqarTvel os 1997-2005 wl ebis saxel mwifo biuj etis

Semosavl ebi da grantebi



rogorc diagramaze Cans, mimdinare wels saxel mwifo biuj etis Semosavl ebi da grantebi wina wle bTan SedarebiT faqtobrivad naxtomiseburad gaizarda 2004 wels 2003 wle Tan SedarebiT adgili qonda 77 procentian zrda. momaval wels ki SedarebiT naklebi zrdaa prognozirebuli.

saintereso 2005 wle is saxel mwifo biuj etis Semosavl ebisa da grantebis 1997 wle Tan Sedareba. 2005 wels dagegmilia 1,2 miliardil arit (306 procentit) meti vidre 1997 wels.

aRsaniSnavia, rom saxel mwifo biuj etis Semosavl ebi da grantebi aSS dol arebSi 1997-2003 wle ebSi yvel aze didi 1997 wels iyo. 2005 wels ki 1997 wle Tan SedarebiT aSS dol aris Sesabamisi kursis gaTval iswinebiT zrda 550 milion aSS dol ars (220 procentis) Seadgens.

saxel mwifo biuj etis Semosavl ebisa da grantebis wile mTlian Sida produqtsi (mSp) 1997-2003 wle ebSi yvel aze maRali (13 procenti) aseve 1997 wels iyo. 2005 wle isatvis dagegmilia am macvneblis 17 procentamde zrda.

cxril i #12. saqarTvel os 2005 wl is saxel mwifo biuj etis Semosul obebi

(aTasi l ari)

dasaxel eba	2005 wel i
saxel mwifo biuj etis Semosavl ebi da grantebi	1,812,700
sagadasaxado Semosavl ebi	1,473,700
arasagadasaxado Semosavl ebi	143,250
kapital uri Semosavl ebi	94,200
grantebi	101,550
deficitis dafinanseba	293,250
saxazino val debul ebebi	20,000
erovnul i bankis sesxi	27,000
msofl io bankis grZel vadiani krediti	36,000
sainvesticio krediti	210,250

saxel mwifo biuj etis sagadasaxado Semosavl ebi 2005 wel s 1 473,7 milioni l ariTaa prognozirebul i. arasagadasaxado Semosavl ebis saxiT 143,2 milioni l aris mobilizebaa prognozirebul i. kapital uri Semosavl ebis prognozi 94,2 milioni l ariTaa gansazRvrul i. grantebis saxiT ki saxel mwifo biuj etSi 101,5 milioni l ari unda Semovides.

**cxril i #13. saqarTvel os 2004-2005 wl is saxel mwifo biuj etis
Semosavl ebi da grantebi**

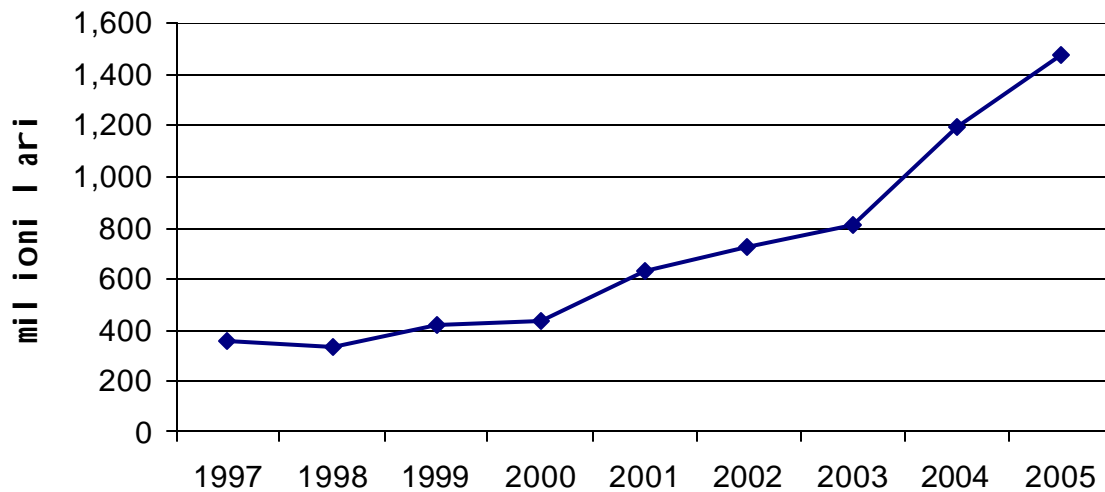
(aTasi l ari)

dasaxel eba	2004 wel i	2005 wel i	zrda 2004 wel Tan Sedarebi T	
			l arebSi	procen- tebSi
saxel mwifo biuj etis Semosavl ebi da grantebi	1,655,030	1,812,700	157,670	110
sagadasaxado Semosavl ebi	1,197,980	1,473,700	275,720	123
arasagadasaxado Semosavl ebi	256,610	143,250	-113,360	56
kapital uri Semosavl ebi	81,400	94,200	12,800	116
grantebi	119,040	101,550	-17,490	85

saxel mwifo biujetis Semosavl ebis zrda ZiriTadad sagadasaxado Semosavl ebis xarj ze xdeba. 2004 wel Tan SedarebiT sagadasaxado Semosavl ebi 23 procentiT, anu 275,7 milioni l ariT izrdeba (ix. diagrama #9). amasTan mimarTebsi gansakuTrebiT *miSvnel ovania is faqti, rom 2005 wl is saxel mwifo biujetis Sesrul eba axal i sagadasaxado kodeqsis pirobebSi moxdeba. kodeqsis Sesabamisad ki sagrZnobl adaa Semcirebul i gadasaxadebis ganakveTebi. nawil i amJamad moqmedi gadasaxadebisa ki saerTod gauqmdeba. Sesabamisad Cndeba garkveul i eWvi arsebobs Tu ara finansTa saministros real uri gaTvl ebi sagadasaxado Semosavl ebis da maT Soris konkretul i gadasaxadebis mobil izebasTan dakavSirebiT. unda aRiniSnos, rom saqarTvel os mTavroba sagadasaxado Semosavl ebis zrdas ekonomikis l egal izaciiT da sagadasaxado administrirebis xarj ze apirebs, Tumca saeWvoa ekonomikis "Crdil Si myofi nawil i" ase swrafad gamovides "mzis sinaTI eze". gadasaxadebis Semcirebis gziT sagadasaxado bazis aseT swraf zrdas arc warmoebis gafarToebsi gamoiwvevs mcire monakveTSi. am procesisaTvis erTi wel i sakmarisi namdvil ad ver iqneba.*

saxel mwifo biujetis Sesaxeb kanonproeqtis TandarTul paketSi mocemul ia cvl il ebebi "sabiujeto sistemis Sesaxeb" kanonSi. aqedan aRsaniSnavia, rom *"sabiujeto sistemis Sesaxeb" kanonidan qreba 29-e muxl is me-5 punqti, romelic iTval iswinebda sagadasaxado Semosavl ebis naxevari wl is da kvartal uri ganweris minimal uri odenobis gansazRvras (Sesabamisad 48% da 23%). 2004 wl is saxel mwifo biujetis Sesrul ebis procesSi aRniSnul i muxl i mudam darRveul i iyo. saqarTvel os finansTa saministro dagegmvis procesis srulyofis sanacvl od, saerTod iRebs aRniSnul muxl s kanonidan.* amasTan, am sakiTxze araferia miTitebul i kanonproeqtis ganmartebiT baraTSi.

**diagrama #9. saqarTvel os saxel mwifo biuj etis sagadasaxado Semosavl ebi
1997-2005 wl ebSi**



gadasaxadebis saxeebis mixedvit saqarTvel os 2005 wl is saxel mwifo biuj etis proeqtSi gaTval iswinebul ia Semdegi:

saSemosavl o gadasaxadi 2004 wel Tan Sedarebit 8 procentiT nakl ebia prognozirebul i da Seadgens 225,7 milion l ars. **mogebis gadasaxadis** saprognozo mocul oba 228,4 milioni l aritaa gansazRvrul i da 2004 wl is saprognozo parametrs 51 procentiT aRemateba. **damatebul i Rirebul ebis gadasaxadis** saxiT 2005 wels 761,7 milioni l aris mobilizebaa gansazRvrul i, es ki mimdinare wels prognozirebul parametrze 27 procentiT metia. **aqcizis** saprognozo parametri mimdinare wel Tan Sedarebit 87 procentitaa gazrdil i da 318,2 milion l ars Seadgens. **sabaJo gadasaxadi** 112,4 milioni l aris odenobit unda iqnes mobilizebul i, anu 2004 wel Tan Sedarebit 21 procentiT meti. **qonebis gadasaxadis** saprognozo macvenebel i 64,8 milioni l aritaa gansazRvrul i, rac 30 procentiT aRemateba wina wl is saprognozo macvenebel s. aqedan miwis dabegvridan misarebi Semosavl is prognozi Seadgens 17,5 milion l ars, xolo sxva qonebis dabegvridan 47,3 milioni l aris mobilizebaa prognozirebul i. **bunbrivi resursebit sargebl obis gadasaxadis** saprognozo parametri 12,2 milioni l aritaa gansazRvrul i. **saTamaSo**

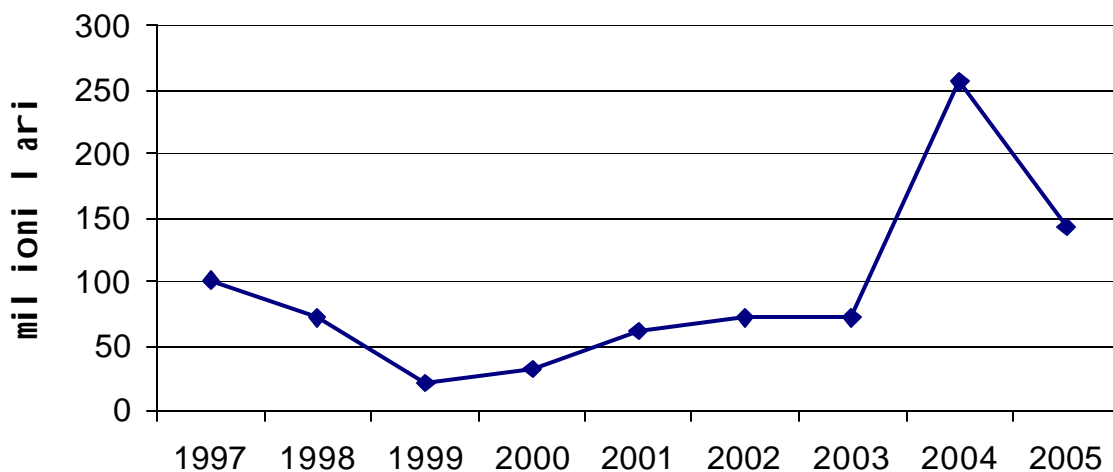
biznesis gadasaxadis saxiT amoRebul i unda iqnes 10,5 milioni l aris odenobiT, rac 2004 wl is saprognozo maCvenebel s 19 procentiT aRemateba. social uri gadasaxadis prognozi ki 285,7 milioni l ariTaa gansazRvrul i. es maCvenebel i mimdinare wel Tan SedarebiT 22 procentiTaa Semicirebul i.

unda aRiniSnos, rom 2005 wel s saxel mwifo biuj etSi mi saRebi saSemosavl o da social uri gadasaxadebis prognozis 2004 wl is prognozTan mimarTebaSi Semicireba axal i sagadasaxado kodeqsiT aris gamowveul i, rac savsebiT l ogikuria. rac Seexeba danarCen gadasaxadebs aq cota ar iyos saeWvo situaciaa. magal iTad, damatebul i Rirebul ebis gadasaxadi mimdinare wel Tan SedarebiT 27 procentiT metia prognozirebul i da es maSin rodesac axal i sagadasaxado kodeqsiT misi ganakveTi 20 procentidan 18 procentamdea Semicirebul i. igive SeiZl eba iTqvas qonebis gadasaxadTan dakavSirebiT, romel ic j er kidev araa zustad gansazRvrul i. aRniSnul i gadasaxadiT, saqarTvel os mTavrobis gancxadebidan gamomdinare, daibegreba mxol od maRal Semosavl iani pirebis uZravi qoneba. faqtobrivad igive SeiZl eba iTqvas miwis gadasaxadzec. am SemTxvevaSi unda vivaraudoT, rom finansTa saministros aRniSnul Tan dakavSirebiT detal uri gaangariSebebi gaaCnia, winaaRmdeg SemTxvevaSi gaurkvevel i rCeba ra meqanizmebiT unda moxdes aseTi gazrdil i sagadasaxado Semosavl ebis mobil izeba da srul ad Sesrul eba.

saqarTvel os 2005 wl is saxel mwifo biuj etis proeqtiT sagrZnobl adaa Semicirebul i saxel mwifo biuj etis arasagadasaxado Semosavl ebi (ix. diagrama #10). maTi saprognozo parametri 143,2 milioni l ariTaa gansazRvrul i da 2004 wl is prognozTan SedarebiT faqtobrivad ganaxevrebul ia (Seadgens 56 procents). mimdinare wel s arasagadasaxado Semosavl ebis aseTi zrda ZiriTadad ori mizeziT iyo gamowveul i: 1. 2004 wl idan special uri Semosavl ebi arasagadasaxado Semosavl ebSi aisaxeba, ramac gamoiwvia maTi zrda. 2. samarTal damcavi organoebis gasakuTrebul i aqtiurobiT, rac korumpirebul i Cinovnikebisagan ukanonod miTvisebul i

saxsrebi amoRebaSi gamoixata. aRniSnul i Tanxebi ki arasagadasaxado Semosavl ebSi aRiricxeboda sxva arasagadasaxado Semosavl ebis muxl iT. gamomdinare iqidan, rom SedarebiT Semcirda "dasaWerTa" ricxvi momaval wel s sagadasaxado Semosavl ebic Sesabamisad daigegma. **unda aRiniSnos, rom arasagadasaxado Semosavl ebSi faqtobrivad yvel a muxl i gazrdil ia, gamonakl iss warmoadgens mxol od aRniSnul i sxva arasagadasaxado Semosavl ebi, roml ebic mimdinare wl is prognozTan SedarebiT 113,4 mil ioni l ar iT (44 procent iT) aris Semcirebul i. savaraudod es is Tanxaa, romel ic 2004 wel s amoRebul i iqna korumpirebul i Cinovnikebisgan da rac 2004 wl is saxel mwifo biuj etis Semosavl ebisa da grantebis prognozis 7 procent s Seadgens.** sagrZnobl adaa Semcirebul i aseve "Semosaval i araZiriTadi (Tanamdevi) gayidvebidan, aRniSnul i muxl iT 2005 wel s mxol od 200 aTasi l aris mobil izebaa prognozirebul i, rodesac mimdinare wel s 12 mil ioni l aris prognozia gakeTebul i.

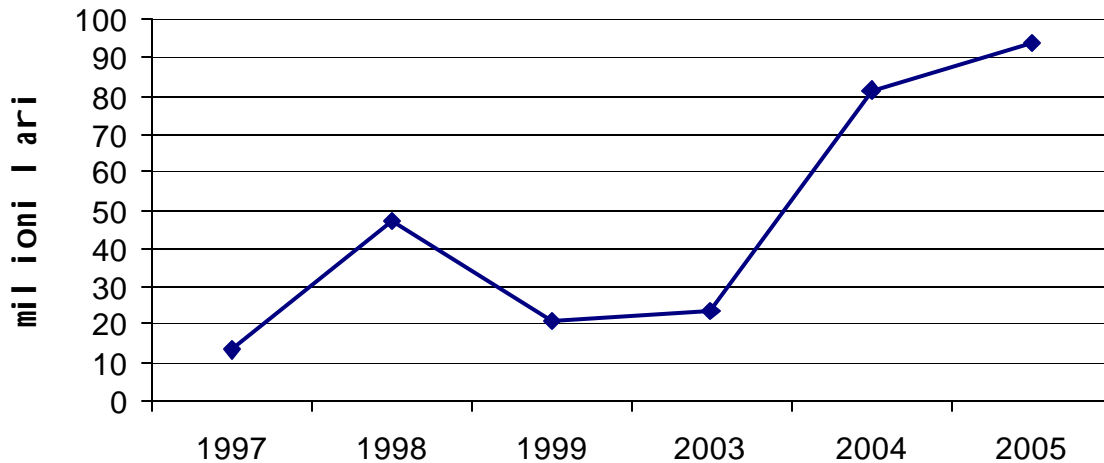
diagrama #10. saqarTvel os saxel mwifo biuj etis arasagadasaxado Semosavl ebi 1997-2005 wl ebSi



rac Seexeba saxel mwifo biuj etis kapital ur Semosavl ebs 2005 wel s 94,2 mil ioni l ar iTaa prognozirebul i, rac mimdinare wl is prognozs (81,4 mil ioni l ari) 16 procent iT aRemateba (diagrama #11).

diagrama #11. saqarTvel os saxel mwifo biuj etis kapital uri

Semosavl ebi 1997-2005 wl ebSi

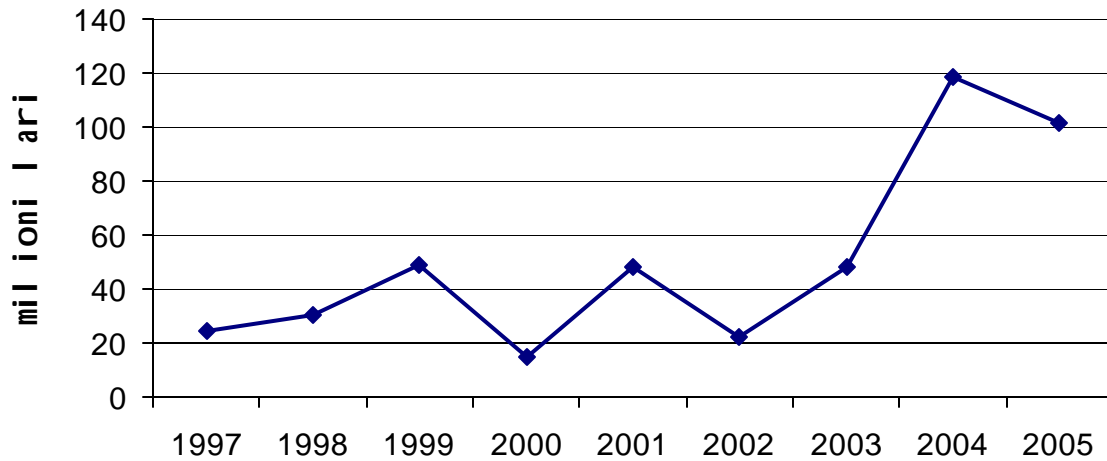


rogorc diagramidan Cans kapital uri Semosavl ebis kuTxiT mniSvnel ovani zrda swored mimdinare wel s dafiqsirda. kapital uri Semosavl ebis muxl i saxel mwifo biuj etis Semosavl ebSi swored mimdinare wel s iqna gadmotanil i, manamde ki aRniSnul i saxsrebi biuj etis deficitis dafinansebis wyarod iyo gamoyenebul i. 2004 wel s 2003 wel Tan SedarebiT zrdam 244 procenti Seadgina. aRniSnul i faqti saqarTvel os axal i mTavrobisa da axal i ekonomikis ministris aqtiur ekonomikur politikas ukavSirdeba da aRniSnul i kursi al baT momaval wel sac gagrZel deba. Tumca aq unda aRvniSnoT isic, rom 2004 wl is monacemebze saubrisas Cven vsaubrobt kapital uri Semosavl ebis prognozirebul parametrebze, xol o rac Seexeba faqtobriv Sesrul ebas, am mxriv saqme arasaxarbiel od gamoiyureba. cxra Tvis monacemebiT mobilizebul ia mxol od 3 milioni lari.

2005 wl is saxel mwifo biuj etis proeqtSi arasagadasaxado Semosavl ebis msgavsad 2004 wel Tan SedarebiT Semcirebul ia aseve grantebis muxl iT misaRebi Semosavl ebis prognozi (ix. diagrama #12). mimdinare wel s 119 milioni laris grantebis miRebaa prognozirebul i, Tumca cxra Tvis monacemebiT jer-jerobiT mxol od 32 milioni laria miRebul i. 2005 wl is

proeqti ki saxel mwifo biuj etis Semosavl iT nawil Si iTval iswinebs 101,5 milioni l aris miRebas.

diagrama #12. saqarTvel os saxel mwifo biuj etis grantebi 1997-2005 wl ebSi



saqarTvel os 2005 wl is saxel mwifo biuj etis deficitis mocul oba kanonproeqtis Tanaxmad 293,2 milioni l ariTaa gansazRvrul i.

cxrili #14. saqarTvel os 2005 wl is saxel mwifo biuj etis deficitis dafinansebis wyaroebi

(aTasi l aris)

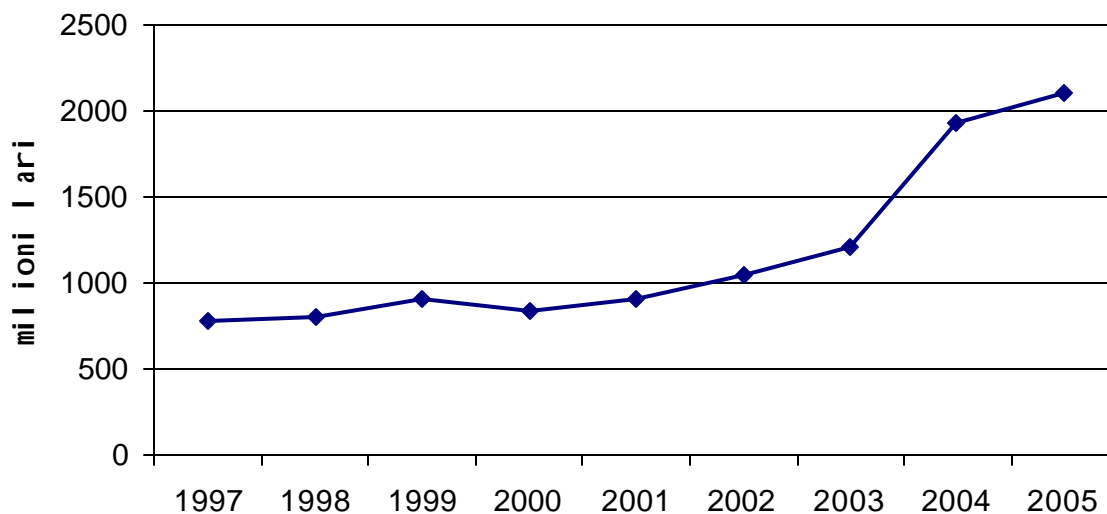
dasaxel eba	2004 wel i	2005 wel i	zrda wina wel Tan SedarebiT	
			l arebSi	proce- ntebSi
saxazino val debul ebebi erovnul i bankis sesxi	13,000	20,000	7,000	154
msofli io bankis grZel vadiani krediti	46,080	36,000	-10,080	78
sainvesticio kreditebi	212,064	210,250	-1,814	99
sul :	271,144	293,250	22,106	108

saxazino val debul ebebis realizaci iT 20 milioni l aris miRebaa prognozirebul i, rac mimdinare wl is monacemebze 54 procent iT metia. msofli io bankis grZel vadiani krediti 10 milioniT nakl ebia gaTval iswinebul i, xolo sainvesticio kreditebi 1,8 milioni l ar iT nakl ebi Semova.

1.2. saqarTvel os 2005 wl is saxel mwifo biuj etis gadasaxdel ebi

saqarTvel os 2005 wl is saxel mwifo biuj etis Sesaxeb kanonproeqtis Sesabamisad momaval wels saxel mwifo 2 106 milioni laris daxarjvas gegmavs (ix. cxrili #15; diagrama #13). SegaxsenebT, rom mimdinare wels saqarTvel os saxel mwifo biuj etis gadasaxdel ebi 1 926 milioni lariTaa dagegmili, Sesabamisad 2005 wl isaTvis 9 procentiani zrdaa gaTval iswinebuli.

diagrama #13. saqarTvel os 2005 wl is saxel mwifo biuj etis gadasaxdel ebi



2005 wl isaTvis saqarTvel os mTavroba ZiriTad prioritets qveynis Tavdacvisunarianobis gaZl ierebas da mosaxl eobis social uri interesebis dacvas aniWebs. amas momombs is faqti, rom saqarTvel os 2005 wl is saxel mwifo biuj etis gadasaxdel ebis funqional uri klasifikaciis Sesabamisad Tavdacvis muxl iT gasawevi xarjebi 2004 wel Tan SedarebiT 33 procentiTaa gazrdili da 139,6 milioni laria gamoyofili. social uri dazRvevisa da social uri uzrunvel yofis muxl iT ki dagegmilia 420,9 milioni laris xarji, rac mimdinare wl is gegmis 114 procentia (2004 wels aRniSnul muxl ze 367,7 milioni laria gamoyofili).

cxril i #15. saqarTvel os 2005 wl is saxel mwifo biuj etis gadasaxdel ebi

(aTasi l ari)

d a s a x e l e b a	2004	2005	zrda wina wel Tan SedarebiT	
			l arebSi	procentebSi
saerTo daniSnul ebis saxel mwifo momsaxureba	235,094	268,773	33,678	114
Tavdacva	104,800	139,586	34,786	133
sazogadoebrivi wesrigi da uSiSroeba	209,286	199,656	-9,630	95
ganaTI eba	74,128	62,662	-11,465	85
j anmrTel obis dacva	131,344	132,834	1,491	101
social uri dazRveva da social uri uzrunvel yofa	367,680	420,883	53,203	114
sabinao-komunal uri meurneoba	2,668	0	-2,668	0
saqmianoba kul turis, sportisa da rel igiis sferoSi	37,834	30,494	-7,341	81
saTbob-energetikul i kompl eqsi	164,855	141,552	-23,303	86
sofl is meurneoba, satyeo meurneoba, meTevzeoba da monadireoba	55,197	60,811	5,615	110
samTomompovebel i mrewvel oba da sasargebl o wiaRiseul i saTbobis gareSe; gadamamuSavebel i mrewvel oba; mSenebl oba	1,402	1,079	-323	77
transporti da kavSirgabmul oba	68,086	47,725	-20,361	70
garemosa da bunebrivi resursebis dacva da ekonomikur saqmianobasTan dakavSirebul i sxva momsaxureba	30,839	22,220	-8,619	72
xarj ebi, romel ic ar ganekutvneba ZiriTad ganyofil ebebs	442,962	577,676	134,714	130
sul saxel mwifo biuj etis gadasaxdel ebi da xarj ebi	1,926,174	2,105,950	179,776	109

2005 wel s mimdinare wel Tan SedarebiT 114 procentiT izrdeba saerTo daniSnul ebis saxel mwifo momsaxurebaze gamoyofil i Taxebi da

Seadgens 268,8 milion lars. 10 procentiT metia gamoyofil i "sofl is meurneoba, satyeo meurneoba, meTevzeoba da monadireoba"-ze. 30 procentiT gaizarda "xarjebi, romelic ar ganekutvneba ZiriTad ganyofil ebebs". j anmrTel obis dacvis kuTxiT gamoyofil i Tanxebi mxol od 1 procentiT izrdeba. aRniSnul i muxl ebi garda saxel mwifo biujetis gadasaxdel ebi funkcional uri kl asifikaciis yvel a muxl i Sencirebul ia. xarjebis Sencireba gansakutrebiT Seexo "transportsa da kavSirgabmul obas", roml is xarji 30 procentiT nakl ebia dagegmil i, vidre es mimdinare wel saa. 28 procentiT nakl ebi Tanxebia gamoyofil i garemosa da bunebrivi resursebis dacvasa da ekonomikur saqmianobasTan dakavSirebul sxva momsaxurebaze. gansakutrebiT unda aRvniSnoT ganaTl ebi sfero, aRniSnul i biujetis arsebul i proeqtis Sesabamisad 62,7 milioni l ar iT dafinansdeba, rac mimdinare wel Tan SedarebiT 15 procentiT nakl ebia. sainteresoa ra mosazrebiT moxda am Tanxebis Sencireba, radgan rogorc cnobilia ukve daiwyo da momaval wel s unda moxdes ganaTl ebi reformis ganxorciel eba da Sesabamisad aRniSnul i moiTxovs did finansur resursebs. 19 procentiT nakl ebiT finansdeba saqmianoba kul turis, sportisa da religiis sferoSi. saTbob-energetikul i kompl eqsi, romel sac mimdinare wel s 164,8 milioni l ar i aqvs gamoyofil i da dafinansebis sakmaod cudi maCvenebl ebiT gamoirCeva, 2005 wel s 141,5 milion l ars miRebs, rac 2004 wl is 86 procentia. am SemTxvevaSi kvl av gaurkvevel ia ratom akl ebs finansTa saministro aRniSnul sferos dafinansebas, miTumetes maSin, rodesac saqarTvel os 2005 wl is saxel mwifo biujetis proeqtis ZiriTadi monacemebisa da mimarTul ebebis dokumentis Sesabamisad 2005-2007 wl ebisatvis qveynis mTavroba erT-erT ZiriTad miznad energetikul usafrTxoebas miicnevs.

teritoriul i erTeul ebisatvis gamoyofil i Tanxebi Semdegnairad gamoiyureba:

cxრილი #16. საკრებულო 2005 წლის სახელმწიფო ბიუჯეტიდან ავტონომიური რესპუბლიკისა და საკრებულო სხვა ტერიტორიების ბიუჯეტებისათვის გადასაცემი ფინანსური დახმარება

(ათასი ლარი)

ტერიტორიის სახელი	2004 წელი	2005 წელი	ზრდა ან შემცირება	
			ლარი	პროცენტი
აფხაზეთის ავტონომიური რესპუბლიკა	7,030	6,800	-230	97
აჭარის ავტონომიური რესპუბლიკა	4,000	43,360	39,360	1,084
კახეთის მხარე	9,425	7,683	-1,742	82
იმერეთის მხარე	18,731	16,702	-2,029	89
კ. ჭყვიშთაძის	5,696	3,589	-2,107	63
სამეგრელო-ზემო სვანეთის მხარე	13,675	12,073	-1,602	88
სიღვეთის მხარე	7,180	7,064	-116	98
ქვემო ქართლის მხარე	7,470	4,222	-3,248	57
კ. რუსთაველი	800		-800	0
გურიის მხარე	5,000	4,424	-576	88
სამცხე-ჯავახეთის მხარე	8,870	7,962	-908	90
მცხეთა-მთიანეთის მხარე	6,025	3,273	-2,752	54
რაჭა-ლეჩხუმი და ქვემო სვანეთის მხარე	4,300	3,860	-440	90
სულ :	91,706	117,423	25,717	128

როგორც ცხრილი #16-დან ჩანს, საკრებულო ტერიტორიებისათვის გადასაცემი თანხები 2005 წლის სახელმწიფო ბიუჯეტის კანონპროექტის, 2004 წლის სახელმწიფო ბიუჯეტის 28 პროცენტის ანუ 25,7 მილიონი ლარითაა გაზრდილი. თუმცა თუ ვინახავთ მხარეების მიხედვით გადაცემულ თანხებს დავინახავთ, რომ პარადოქსული სიტუაციაა შემჩნეული, რადგან ფაქტობრივად ყველა მხარესათვის გადასაცემი თანხები საკმაოდ შემცირებულია. საშუალოდ გაზრდილია აჭარის ავტონომიური რესპუბლიკის ფინანსური დახმარება ერთბაშად 98,4 პროცენტით. დაფინანსება განსაკუთრებით შემცირდა მცხეთა-მთიანეთს – 46 პროცენტით და ქვემო ქართლის – 43 პროცენტით. განსაკუთრებით უნდა აღინიშნოს ასევე მსხვილი კალაქები, ანუ ის კალაქები, რომლებიც არ სდიან რაიონის შემადგენლობას. მათ შორის, კალაქ ჭყვიშთაძის მიმდინარე ბიუჯეტის 37 პროცენტით ნაკლები ფინანსური სახსრები გადაეცემა. გაუგებარია

Tu ratom xdeba finansTa saministros mier amgvare qmedebebi, radganac rodesac qveynis mTavrobas saubari aqvs sxvadasxva prioritetebze da qveynis ganvitarebaze, mxedvel obidan ar unda gamorCeT is faqti, rom adgil obriv, kerZod ki TviTmmarTvel obebis doneze arsebul i probl emebis mogvarebamde yovel gvar ganvitarebaze saubari zedmetia. aseTi midgomebiT ki araTu TviTmmarTvel obis ganvitarebas, aramed misi amJamindel i donis gauaresebas uwyoben xel s.

aRsaniSnavia aseve, rom SevardnaZis mTavrobis mier wl ebis ganmavl obaSi gadavadebul i SeRavaTebis amoqmedebas arc axal i mTavroba ar apirebs. im dros, rodesac 2005 wel s 2003 wel Tan SedarebiT gadasaxdel ebi daaxl oebiT 900 mil ioni l ar iT izrdeba saxel mwifom ver gamonaxa ramdenime aTeul i mil ioni im SeRavaTebis asamoqmedebl ad, roml ebiC gaTval iswinebul ia mTel i rigi saqarTvel os kanonebiT, kerZod: saj aro samsaxuris Sesaxeb, mosamarTl eTa social uri da samarTl ebrivi dacvis garantiebis Sesaxeb, Sromis kanonTa kodeqsiT gaTval iswinebul i sapensio danamatebi, saqarTvel os parl amentis wevris statusis Sesaxeb, romel ic iTval iswinebs parl amentarTaTvis TanaSemweebis daniSvnas, omisa da samxedro Zal ebis veteranebis Sesaxeb, romel ic iTval iswinebs gadidebul pensiebs, mecnierTa social uri uzrunvel yofis garantiebis Sesaxeb, parl amentis aparatis sapensio uzrunvel yofis Sesaxeb, samxedro Sinagan saqmeTa organoebis da saxel mwifo dacvis special uri samsaxuridan TadarigSi daTxovnil pirTa da maTi oj axis wevrTa sapensio uzrunvel yofis Sesaxeb.